



## CEILING ACCESS HATCHES Model KSTE/CAD (Exposed Grid) For Use in Square or Beveled Edge Ceiling Tile



KARP ASSOCIATES, INC.

DATE

### SPECIFICATIONS

#### GENERAL SCOPE:

Access doors shall be Karp Type KSTE/CAD as manufactured by Karp Associates, Inc., Melville, N.Y. Sizes shall be as indicated on the drawings.

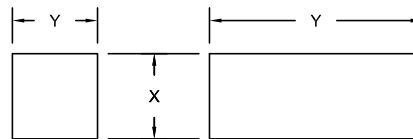
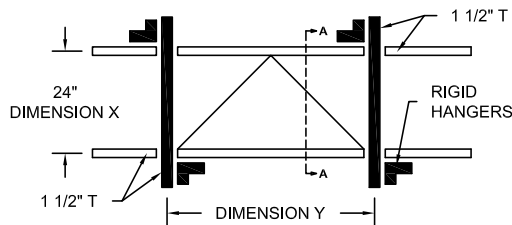
#### CONSTRUCTION:

1. Frame shall be 20 gage hot dipped galvanized steel.
2. Door shall be 20 gage electro-galvanized steel with 7/32" flange stove enameled white.
3. Escutcheon caps shall be plastic molded with hinged flaps.
4. Locks shall be budget locks operated with square shanked key.

#### STANDARD SIZES (Special Sizes On Request)

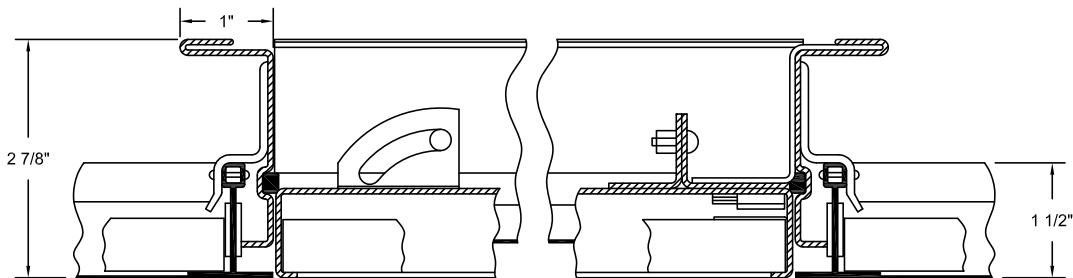
DOOR SIZE (IN.) X Y	SHIP WT. (LBS.)
24 x 24	19.0
24 x 48	35.0

PROJECT DATA					
Project Name:					
Architect:					
Contractor:					
Agent/Customer Name:					
Tagging Instructions:					
Special Instructions:					
PROJECT SCHEDULE					
Qty.	H	W	No. of Latches	Finish	Remarks



PANEL SUPPORT ILLUSTRATION

OPENING SYSTEMS



SECTION A-A  
SCALE 1:2



Made with Union Labor



**FOR MORE INFORMATION CALL 1-888-926-1365**  
 Superior Specialty Supply • 9 Council Drive • PO Box 417 • Woodsboro, MD 21798 • [www.sssupply.com](http://www.sssupply.com)