

**SUBMITTAL: AMBASSADOR™ STEEL FX2™ FIRE-RATED EXTINGUISHER CABINETS**

The Ambassador Series is a Durable, Attractive Steel Cabinet with Powder-coat Finish that Stands up to Conditions in Commercial Buildings.

**Door & Trim Construction:** Cold rolled steel with white powder-coated finish standard. Flush cabinet doors with a 5/8" door stop are attached by a continuous hinge and equipped with zinc-plated handle and roller catch. All models have 1-3/4" wide trim on frame and 1-1/4" trim on doors with glazing.

**Trim Style & Depth:** *Trimless Recessed* - See separate submittal, *Recessed 3/8"* flat trim, *Semi Recessed* - 1-1/4", 1-1/2" Square Edge or 2-1/2", 3", 4", 4-1/2" Rolled Edge (4" has Flush pull).

**Tub:** The tub is constructed of cold rolled steel with white powder-coat finish standard. Tub forms a flange to cover cut edges of wallboard material. Fire-resistant material is attached to the exterior of the tub.. *Please note that dimensions for wall opening have changed for the new FX2 design. See Chart on pg 2.*

**Fire-Rating:** Fire-FX2™ cabinets are fabricated in accordance with the UL label for one and two hour combustible and non-combustible wall system building codes. The fire testing has met the requirement of ANSI/UL 1479 (ASTM -E814) and ULC/CAN S115 for membrane and penetration firestops. Installation instructions must be strictly adhered to in order to obtain the fire rating.



**1017V10FX2  
3" Rolled Trim**

**8116F10FX2  
1-1/2" Square Trim  
Semi-Recessed**

**STEP 1: SELECT MODEL NUMBER AND QUANTITY ON CHART** (refer to chart on pg 2)

**A.** Determine Trim Style according to wall depth. **B.** Determine Tub I.D. according to size most suited for extinguisher and wall opening.

**STEP 2: SELECT DOOR STYLE WITH HANDLE**

Check one box below - See Examples on Page 2

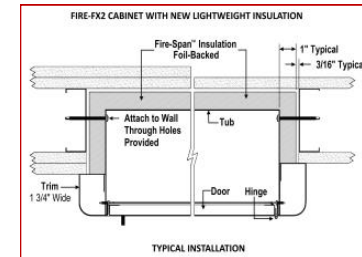
- |   |   |
|---|---|
| <input type="checkbox"/> <b>F</b> Full Glazing                          | <input type="checkbox"/> <b>L22</b> Solid with SAF-T-LOK™                     |
| <input type="checkbox"/> <b>G</b> Full Glazing with SAF-T-LOK™          | <input type="checkbox"/> <b>L24</b> Solid with Cylinder Lock - No Handle      |
| <input type="checkbox"/> <b>D</b> Horizontal Duo Panel                  | <input type="checkbox"/> <b>V</b> Vertical Duo                                |
| <input type="checkbox"/> <b>E</b> Horizontal Dual Panel with SAF-T-LOK™ | <input type="checkbox"/> <b>W</b> Vertical Duo with SAF-T-LOK™                |
| <input type="checkbox"/> <b>S21</b> Solid Door                          | <input type="checkbox"/> <b>B</b> Solid with 2" x 4" View Window & SAF-T-LOK™ |

[BIM Objects for REVIT® Platform](#)

**STEP 3: SELECT DOOR GLAZING**

(Check one box below)

- |  |   |   |
|--|---|---|
| <input type="checkbox"/> <b>10</b> Clear Acrylic                     | <input type="checkbox"/> <b>15</b> Bronze Acrylic | <input type="checkbox"/> <b>17</b> Clear Tempered Glass   |
| <input type="checkbox"/> <b>13</b> Clear Wire Glass with Safety Film | <input type="checkbox"/> <b>16</b> Gray Acrylic   | <input type="checkbox"/> <b>18</b> Laminated Safety Glass |



**STEP 4: OPTIONAL FEATURES AT ADDED COST (SELECT ANY)**

- |   |   |   |  |
|---|---|---|--|
| <input type="checkbox"/> Optional Tub Color: ___ Black ___ Red                    | <input type="checkbox"/> Black Vertical FE Letters <b>LDCVBFE</b>   | <input type="checkbox"/> Black Vertical Decal <b>LDVBFE</b>   | <input type="checkbox"/> (MC) Magnetic Catch—Replaces Roller Catch<br><input type="checkbox"/> Optional Lock for G, E, W, L22, B: _____<br><input type="checkbox"/> (CA) Commander Alarm<br><input type="checkbox"/> (BA) Brigadier Alarm<br><input type="checkbox"/> Etched/Engraved Letters in Glass/ Metal- Attach Sub. |
| <input type="checkbox"/> Futura "Fire" Pull ___ Mill Alum ___ Red ___ White       | <input type="checkbox"/> Red Vertical FE Letters <b>LDCVRFE</b>     | <input type="checkbox"/> Red Vertical Decal <b>LDVRFE</b>     |  |
| <input type="checkbox"/> Flush Pull Handle  | <input type="checkbox"/> White Vertical FE Letters <b>LDCVWFE</b>   | <input type="checkbox"/> White Vertical Decal <b>LDVWFE</b>   |  |
| <input type="checkbox"/> Polished Chrome Lever Handle (P6)                        | <input type="checkbox"/> Black Horizontal FE Letters <b>LDCHBFE</b> | <input type="checkbox"/> Black Horizontal Decal <b>LDHBFE</b> |  |
| <input type="checkbox"/> <u>Optional Colors:</u> ___ Red ___ Black ___ Flat Black | <input type="checkbox"/> Red Horizontal FE Letters <b>LDCHRFE</b>   | <input type="checkbox"/> Red Horizontal Decal <b>LDHRFE</b>   |  |
| ___ Sand ___ AMS Beige ___ SC Flat Beige  | <input type="checkbox"/> White Horizontal FE Letters <b>LDCHWFE</b> | <input type="checkbox"/> White Horizontal Decal <b>LDHWFE</b> |  |
| ___ Gray Primer ___ Bronze ___ Silver   |   |   |  |

For More Information on Options See Other Submittals: [Decals/Die Cuts & Wall Signs.](#) [More Alarm Information](#)

<p><b>ACTIVAR INC.</b> CONSTRUCTION PRODUCTS GROUP</p>	Distributor:	Quantity:
	Contractor:	Approved By:
	Model #:	Architect:
	Project:	Date: © 2017 Activar Construction Products Group, Inc
6/13/2017		

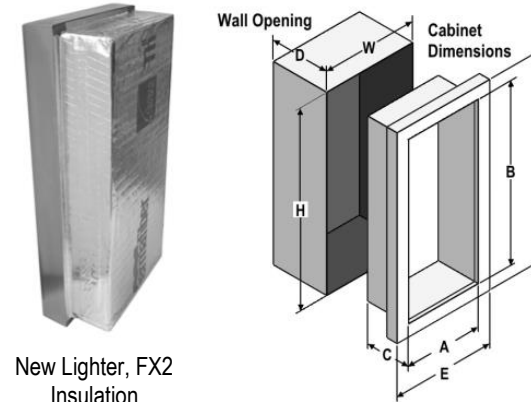


**FOR MORE INFORMATION CALL 1-888-926-1365**

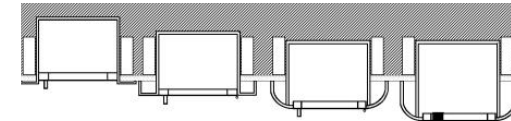
Superior Specialty Supply • 9 Council Drive • PO Box 417 • Woodsboro, MD 21798 • [www.sssupply.com](http://www.sssupply.com)

## SUBMITTAL: AMBASSADOR FX2 FIRE-RATED EXTINGUISHER CABINETS PLEASE NOTE CHANGES IN WALL OPENING P 2 OF 2

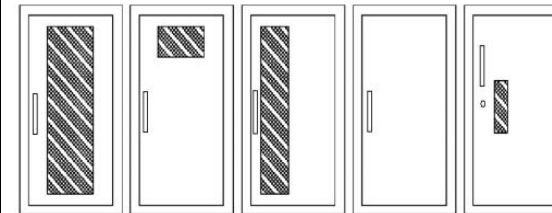
TRIM & DOOR SERIES #			Tub I.D.			Frame O.D.		FX Wall Opening New Dimensions in 2015 - Please Note!			Fits Extinguishers <a href="#">View Submittal</a>
QTY	Model	Trim Style	A	B	C	E	F	W	H	D	
	<b>8115</b>	Flat 3/8" Trim ●	9	18	5 1/2	12 3/8	21 3/8	<b>11 5/16</b>	<b>20 5/16</b>	<b>6 7/16</b>	Cosmic & Galaxy 2 1/2-6 (6 lb must be mounted to tub back)
	<b>8116</b>	1 1/2 Square ●	9	18	5 1/2	12 3/8	21 3/8	<b>11 5/16</b>	<b>20 5/16</b>	<b>5 3/16</b>	Mercury 2 1/2 & 5
	<b>8117</b>	2 1/2 Rolled ●	9	18	5 1/2	12 3/8	21 3/8	<b>11 5/16</b>	<b>20 5/16</b>	<b>4</b>	Cosmic/Gal/Merc 2-5
	<b>1710</b>	2-1/4 Square ●	10 1/2	24	5	13 7/8	27 3/8	<b>12 13/16</b>	<b>26 5/16</b>	<b>4</b>	Cosmic & Galaxy 2 1/2-6 (6lb must be mounted to tub back)
	<b>1815</b>	Flat 3/8" Trim ●	10 1/2	24	5 1/2	13 7/8	27 3/8	<b>12 13/16</b>	<b>26 5/16</b>	<b>6 7/16</b>	Mercury 2 1/2-5
	<b>1816</b>	1 1/2 Square ●	10 1/2	24	5 1/2	13 7/8	27 3/8	<b>12 13/16</b>	<b>26 5/16</b>	<b>5 3/16</b>	
	<b>1817</b>	3 Rolled ●	10 1/2	24	5 1/2	13 7/8	27 3/8	<b>12 13/16</b>	<b>26 5/16</b>	<b>3 5/8</b>	
	<b>1812</b>	4 Rolled/Flush Pull ●	10 1/2	24	5 1/2	13 7/8	27 3/8	<b>12 13/16</b>	<b>26 5/16</b>	<b>2 7/8</b>	
	<b>1818</b>	4 1/2 Rolled	10 1/2	24	5 1/2	13 7/8	27 3/8	<b>12 13/16</b>	<b>26 5/16</b>	<b>2 3/16</b>	
	<b>1015</b>	Flat 3/8" Trim ●	10 1/2	24	6	13 7/8	27 3/8	<b>12 13/16</b>	<b>26 5/16</b>	<b>6 15/16</b>	
	<b>1016</b>	1 1/2 Square ●	10 1/2	24	6	13 7/8	27 3/8	<b>12 13/16</b>	<b>26 5/16</b>	<b>5 11/16</b>	Cosmic & Galaxy 2 1/2 - 10 Sentinel 5
	<b>1017</b>	3 Rolled ●	10 1/2	24	6	13 7/8	27 3/8	<b>12 13/16</b>	<b>26 5/16</b>	<b>4</b>	Mercury 2 1/2, 5
	<b>1012</b>	4 Rolled/Flush Pull ●	10 1/2	24	6	13 7/8	27 3/8	<b>12 13/16</b>	<b>26 5/16</b>	<b>3 3/8</b>	
	<b>1018</b>	4 1/2 Rolled	10 1/2	24	6	13 7/8	27 3/8	<b>12 13/16</b>	<b>26 5/16</b>	<b>2 11/16</b>	
	<b>2015</b>	Flat 3/8" Trim ●	12	27	7 3/4	15 3/8	30 3/8	<b>14 5/16</b>	<b>29 5/16</b>	<b>8 11/16</b>	Any Cosmic or Galaxy (20 lb must be mounted to tub back), Mercury, Saturn or Grenadier P, Sentinel 5 & 10
	<b>2016</b>	1 1/4 Square ●	12	27	7 3/4	15 3/8	30 3/8	<b>14 5/16</b>	<b>29 5/16</b>	<b>7 11/16</b>	
	<b>2017</b>	2 1/2 Rolled ●	12	27	7 3/4	15 3/8	30 3/8	<b>14 5/16</b>	<b>29 5/16</b>	<b>6 7/16</b>	
	<b>2012</b>	4 Rolled/Flush Pull ●	12	27	7 3/4	15 3/8	30 3/8	<b>14 5/16</b>	<b>29 5/16</b>	<b>5 1/8</b>	
	<b>2018</b>	4 1/2 Rolled	12	27	7 3/4	15 3/8	30 3/8	<b>14 5/16</b>	<b>29 5/16</b>	<b>4 7/16</b>	
	<b>3015</b>	Flat 3/8" Trim ●	16	32	7 3/4	19 3/8	35 3/8	<b>18 5/16</b>	<b>34 5/16</b>	<b>8 11/16</b>	Any Cosmic or Galaxy (20 lb must be mounted to tub back), Mercury, Saturn or Grenadier P, Sentinel 5 & 10
	<b>3016</b>	1 1/4 Square ●	16	32	7 3/4	19 3/8	35 3/8	<b>18 5/16</b>	<b>34 5/16</b>	<b>7 11/16</b>	
	<b>3017</b>	2 1/2 Rolled ●	16	32	7 3/4	19 3/8	35 3/8	<b>18 5/16</b>	<b>34 5/16</b>	<b>6 7/16</b>	
	<b>3012</b>	4 Rolled/Flush Pull ●	16	32	7 3/4	19 3/8	35 3/8	<b>18 5/16</b>	<b>34 5/16</b>	<b>5 1/8</b>	
	<b>3018</b>	4 1/2 Rolled	16	32	7 3/4	19 3/8	35 3/8	<b>18 5/16</b>	<b>34 5/16</b>	<b>4 7/16</b>	
	<b>4015</b>	Flat 3/8" Trim ●	20	27	7 3/4	23 3/8	30 3/8	<b>22 5/16</b>	<b>29 5/16</b>	<b>8 11/16</b>	Any Cosmic or Galaxy (20 lb must be mounted to tub back), Mercury, Saturn or Grenadier P, Sentinel 5-15, 272
	<b>4016</b>	1 1/4 Square ●	20	27	7 3/4	23 3/8	30 3/8	<b>22 5/16</b>	<b>29 5/16</b>	<b>7 11/16</b>	
	<b>4017</b>	2 1/2 Rolled ●	20	27	7 3/4	23 3/8	30 3/8	<b>22 5/16</b>	<b>29 5/16</b>	<b>6 7/16</b>	
	<b>4012</b>	4 Rolled/Flush Pull ●	20	27	7 3/4	23 3/8	30 3/8	<b>22 5/16</b>	<b>29 5/16</b>	<b>5 1/8</b>	
	<b>4018</b>	4 1/2 Rolled	20	27	7 3/4	23 3/8	30 3/8	<b>22 5/16</b>	<b>29 5/16</b>	<b>4 7/16</b>	



New Lighter, FX2  
Insulation



3/8" Flat Trim    1-1/2" Square Trim    2-1/2", 3" Rolled Edge    4" Rolled Edge with Recessed Pull Standard



F - Full glass with pull handle  
G - Full glass with pull handle above Saf-T-Lok (not shown)  
D - Horizontal duo panel with pull handle  
E - Horizontal duo panel with pull handle above Saf-T-Lok (not shown)  
V - Vertical duo panel with pull handle  
W - Vertical duo panel with pull handle above Saf-T-Lok (not shown)  
S21 - Solid with pull handle  
L22 - Solid with pull handle above  
L24 - Solid with cylinder key lock and no handle  
B - Small view window with pull handle, and Saf-T-Lok

ADA Cabinet Mounting Height: Standard Pull on G, E, W, L22 and B Door Styles with Saf-T-Lok are 3 5/8" Higher than Door Center, so Allow for that When Mounting Cabinet. Standard Pull with No Lock or Flush Pull are Centered on Door. [ADA Information](#)

[VIEW ALL DOOR STYLES ONLINE](#)

● Cabinets meet ADA 4" Projection Guidelines

Models shown in **Large Bold** above are available in several door styles for Quick Shipment. [See current Stock](#)



**FOR MORE INFORMATION CALL 1-888-926-1365**

Superior Specialty Supply • 9 Council Drive • PO Box 417 • Woodsboro, MD 21798 • [www.sssupply.com](http://www.sssupply.com)