

SUBMITTAL: 3600 SERIES BLANKET & EXTINGUISHER CABINET - ALUMINUM

Door and Trim Construction: Clear anodized aluminum. Flush cabinet doors with a 5/8" door stop are attached by a continuous hinge and equipped with zinc-plated handle and roller catch. Full glazed front with pull handle. Theft-deterrent SAF-T-LOK™ also available.

Trim Style and Depth: Recessed - 3/8" Flat Trim, Semi-Recessed - 1-1/2" Square Trim, 2-1/2", 4" or 4-1/2" Rolled Edge or Surface-Mounted- Square Edge. Rolled edge models are constructed of mechanically-joined extrusions 1-3/4" face trim on frame and 1-1/4" trim on door. ADA-compliant models in blue.

Tub: Constructed of cold rolled steel with white powder-coat finish standard. Surface-mounted models have clear anodized aluminum tubs.

Glazing: .09 Acrylic Glazing

Shelf: Shelf is located 9" from the top of the cabinet, providing storage for the blanket above the extinguisher.

Blanket: Includes a nominal 62" x 80" x 2.75 lb., processed wool/synthetic fire blanket which meets the Flammable Fabrics Act: Flammability of Clothing Textiles, Title 16, CFR1610

Fire Rated Option : [See Separate Submittal for FX Model](#)

STEP 1: Select Model Number, Size and Quantity (Refer to Chart Below)

STEP 2: Select Door Style:

- ___ F10 Full Acrylic Glazing w/Pull ___ G10 Full Acrylic Glazing w/SAF-T-LOK™ & Pull ___ S21 Solid Door w/Pull ___ L22 Solid Door w/Saf-T-Lok® & Pull
- ___ V10 Vert. Duo Acrylic & Pull ___ W10 Vert. Duo Acrylic w/SAF-T-LOK™ & Pull ___ F17 Full Tempered Glass Door & Pull
- ___ W17 Vert. Duo w/SAF-T-LOK™ & Pull ___ F13 Full WS Glass Door & Pull (WireShield Glass with Safety Film) ___ G17 Full Temp. w Saf-T-Lok™& Pull


STEP 3: Optional Features at Additional Cost:

- | | | |
|---|--|--|
| <input type="checkbox"/> Aluminum Tub - Clear Anodized | <input type="checkbox"/> Strobe Alarm (3622, 3628 & 3623 models) | <input type="checkbox"/> White Vertical FE Letters LDCVWFE |
| <input type="checkbox"/> Color Anodized Trim and Door Dark Bronze (pull to match) | <input type="checkbox"/> Futura "Fire" Handle | <input type="checkbox"/> Black Horizontal FE Letters LDCHBFE |
| <input type="checkbox"/> Color Tub - Red | <input type="checkbox"/> Flush Pull Handle | <input type="checkbox"/> Red Horizontal FE Letters LDCHRFE |
| <input type="checkbox"/> Color Tub - Black | <input type="checkbox"/> "Fire Blanket" Letters - Red Horizontal LDCHRFB | <input type="checkbox"/> White Horizontal FE Letters LDCHWFE |
| <input type="checkbox"/> Commander Alarm | <input type="checkbox"/> Black Vertical FE Letters LDCVBFE | View Anodized Finishes Online |
| <input type="checkbox"/> Brigadier Alarm View Alarms | <input type="checkbox"/> Red Vertical FE Letters LDCVRFE | BIM Objects for REVIT® Platform |



3627F10

QTY	TRIM & DOOR & SERIES #		TUB I.D.			FRAME O.D.		WALL OPENING			ACCOMMODATES FOLLOWING EXTINGUISHERS
	Model	Trim Style	A	B	C	E	F	W	H	D	View extinguisher Submittal
	3625	Flat Trim	12"	36"	8"	15-3/8"	39-3/8"	13"	37"	8	Cosmic & Galaxy 2.5-10, Mercury 2.5-15 1/2, Sentinel 5-10, Saturn 15-25, Grenadier P.
	3626	1-1/2" Square Edge	12"	36"	8"	15-3/8"	39-3/8"	13"	37"	6 3/4"	
	3627	2-1/2" Rolled Edge	12"	36"	8"	15-3/8"	39-3/8"	13"	37"	6 1/4"	
	3622	4" Rolled Edge—ADA Pull	12"	36"	8"	15-3/8"	39-3/8"	13"	37"	4 7/8"	
	3628	4-1/2" Rolled Edge	12"	36"	8"	15-3/8"	39-3/8"	13"	37"	4	
	3623	Surface-Mounted Square	15-3/16"	39-3/16"	8"	15-3/8"	39-3/8"	---	---	---	

 <p>ACTIVAR INC. CONSTRUCTION PRODUCTS GROUP 3600 IS A TRADEMARK OF ACTIVAR PLEASE DOWNLOAD THE MOST CURRENT SUBMITTAL FROM THE WEBSITE BEFORE ORDERING</p>	Distributor:	Quantity:
	Contractor:	Approved By:
	Model #:	Architect:
	Project:	Date:

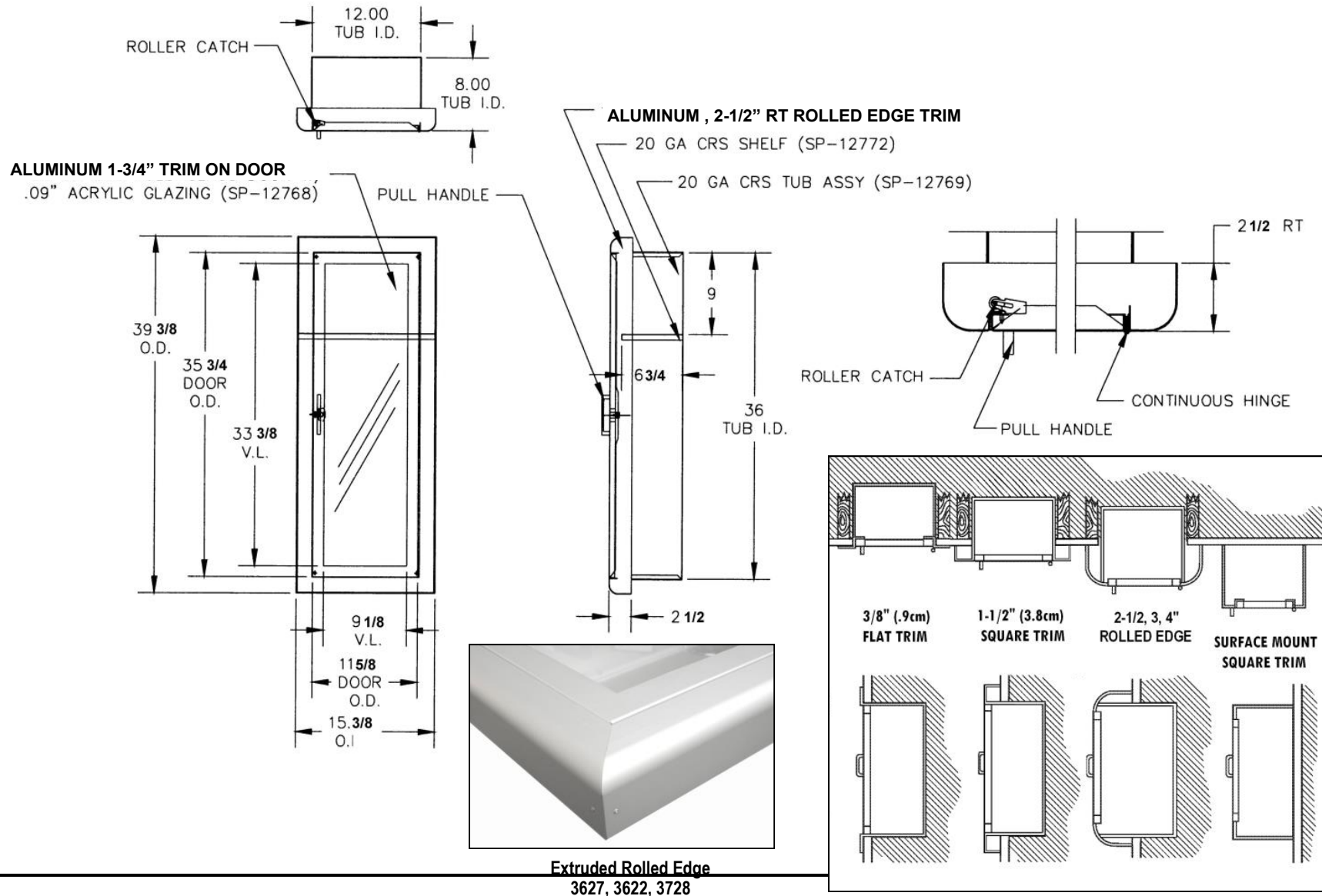
10/5/16



FOR MORE INFORMATION CALL 1-888-926-1365

Superior Specialty Supply • 9 Council Drive • PO Box 417 • Woodsboro, MD 21798 • www.sssupply.com

SUBMITTAL: 3600 SERIES BLANKET & EXTINGUISHER CABINET - ALUMINUM



FOR MORE INFORMATION CALL 1-888-926-1365

Superior Specialty Supply • 9 Council Drive • PO Box 417 • Woodsboro, MD 21798 • www.sssupply.com