

**SUBMITTAL: 3600™ SERIES BLANKET & EXTINGUISHER CABINET - STAINLESS STEEL PAGE 1 OF 2**

**Door and Trim Construction:** No. 4 stainless steel. Flush cabinet doors with a 5/8" door stop are attached by a continuous hinge and equipped with zinc-plated handle and roller catch. Full glazed front with pull handle.

**Trim Style and Depth:** *Recessed* - 3/8" Flat Trim. *Semi-Recessed* - 1-1/2" Square Trim, 2-1/2", 4" or 4-1/2" Rolled Edge. *Surface-Mounted*. - has a square edge. 1-3/4" face trim on frame and 1-1/4" trim on door. ADA-compliant models in [blue](#).

**Tub:** Constructed of cold rolled steel with white powder-coat finish standard. Surface mounted models have stainless tub.

**Glazing:** .09 Acrylic Glazing

**Shelf:** Shelf is located 9" from the top of the cabinet, providing storage for the blanket above the extinguisher.

**Blanket:** Includes a nominal 62" x 80" x 2.75 lb., processed wool/synthetic fire blanket which meets the Flammable Fabrics Act: Flammability of Clothing Textiles, Title 16, CFR1610

**Fire Rated Option :** [See Separate Submittal for FX Model](#)

**STEP 1: Select Model Number, Size and Quantity** (Refer to Chart Below)

**STEP 2: Select Door Style:**

\_\_\_ **F10** Full Acrylic Glazing w/Pull \_\_\_ **G10** Full Acrylic Glazing w/SAF-T-LOK™ & Pull \_\_\_ **S21** Solid Door w/Pull \_\_\_ **L22** Solid Door w/Saf-T-Lok® & Pull  
 \_\_\_ **F17** Full Tempered Glass Door & Pull \_\_\_ **V10** Vert. Duo Acrylic & Pull \_\_\_ **W10** Vert. Duo Acrylic w/SAF-T-LOK™ & Pull \_\_\_ **W17** Vert. Duo w/SAF-T-LOK™ & Pull

**STEP 3: Optional Features at Additional Cost:**


- |  |  |   |
|--|--|---|
| <input type="checkbox"/> Color Tub - Red     | <input type="checkbox"/> Strobe Alarm (surface mt. models)                     | <input type="checkbox"/> Red Vertical FE Letters <b>LDCVRFE</b>     |
| <input type="checkbox"/> Color Tub - Black   | <input type="checkbox"/> Futura "Fire" Handle                                  | <input type="checkbox"/> White Vertical FE Letters <b>LDCVWFE</b>   |
| <input type="checkbox"/> Stainless Steel Tub | <input type="checkbox"/> Flush Pull Handle                                     | <input type="checkbox"/> Black Horizontal FE Letters <b>LDCHBFE</b> |
| <input type="checkbox"/> Commander Alarm     | <input type="checkbox"/> "Fire Blanket" Letters - Red Horizontal <b>DCHRFB</b> | <input type="checkbox"/> Red Horizontal FE Letters <b>LDCHRFE</b>   |
| <input type="checkbox"/> Brigadier Alarm     | <input type="checkbox"/> Black Vertical FE Letters <b>LDCVBF E</b>             | <input type="checkbox"/> White Horizontal FE Letters <b>LDCHWFE</b> |



**Model 3635F10**

[BIM Objects for REVIT® Platform](#)

QTY	TRIM & DOOR & SERIES #		TUB I.D.			FRAME O.D.		WALL OPENING			ACCOMMODATES FOLLOWING EXTINGUISHERS
	Model	Trim Style	A	B	C	E	F	W	H	D	<a href="#">View extinguisher Submittal</a>
	<b>3635</b>	Flat Trim	12"	36"	8"	15-3/8"	39-3/8"	13"	37"	7 7/8"	Cosmic & Galaxy 2.5-10, Mercury 2.5-15 1/2,  Sentinel 5-10, Saturn 15-25
	<b>3636</b>	1-1/2" Square Edge	12"	36"	8"	15-3/8"	39-3/8"	13"	37"	6 5/8"	
	<b>3637</b>	2-1/2" Rolled Edge	12"	36"	8"	15-3/8"	39-3/8"	13"	37"	5 5/8"	
	<b>3632</b>	4" Rolled Edge—ADA Pull	12"	36"	8"	15-3/8"	39-3/8"	13"	37"	4 1/8"	
	<b>3638</b>	4-1/2" Rolled Edge	12"	36"	8"	15-3/8"	39-3/8"	13"	37"	3 5/8"	
	<b>3633</b>	Surface-Mounted Square	15-3/16"	39-3/16"	8"	15-3/8"	39-3/8"	---	---	---	

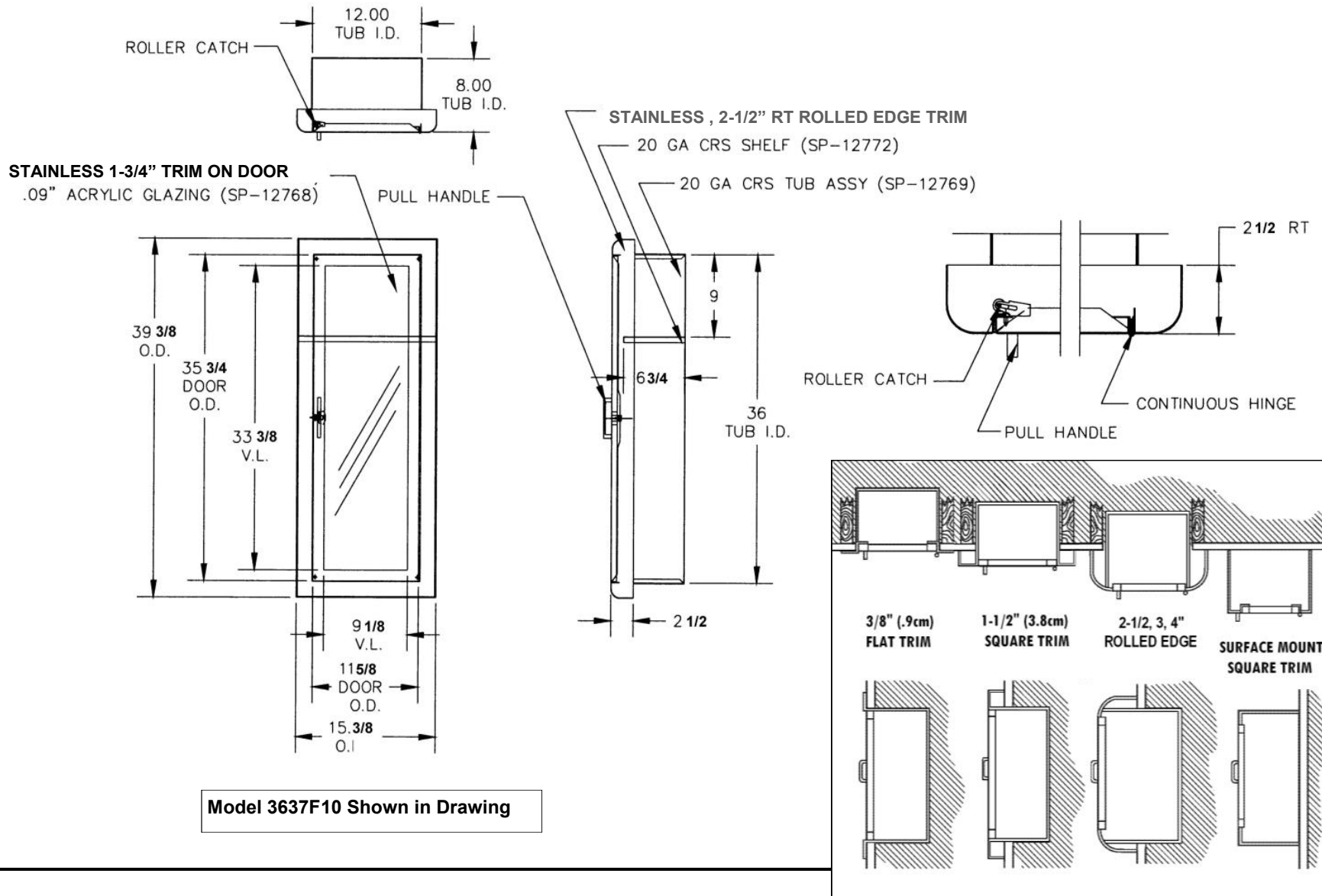
 <p><b>ACTIVAR</b> INC. <small>www.activarcpg.com</small> Construction Products Group</p> <p>3600 AND SAF-T-LOK ARE TRADEMARKS OF ACTIVAR PLEASE DOWNLOAD THE MOST CURRENT SUBMITTAL FROM WEBSITE BEFORE ORDERING</p>	Distributor:	Quantity:
	Contractor:	Approved By:
	Model #:	Architect:
	Project:	Date:
5/19/2015		



**FOR MORE INFORMATION CALL 1-888-926-1365**

Superior Specialty Supply • 9 Council Drive • PO Box 417 • Woodsboro, MD 21798 • [www.sssupply.com](http://www.sssupply.com)

**SUBMITTAL: 3600 SERIES BLANKET & EXTINGUISHER CABINET - STAINLESS STEEL**



**FOR MORE INFORMATION CALL 1-888-926-1365**

Superior Specialty Supply • 9 Council Drive • PO Box 417 • Woodsboro, MD 21798 • [www.sssupply.com](http://www.sssupply.com)