

SUBMITTAL: DOUBLE LEAF SMOKE VENT - UFV™

Certifications: UL Listed # ZBDZ.R16688. Tested to meet ANSI/UL793 standard for "automatically-operated roof vents". The smoke vents are equipped with a UL-listed 165° F fusible link for automatic operation. The fusible link can be quickly and easily replaced.

Sizes: Models 48" x 48" to 48" x 96" have UL listing. **Roof Opening size is order size.**

Construction: Covers are 11 gauge aluminum insulated with fiberglass, curb and curb frame are 14 gauge galvanized steel, fully welded and ground smooth, and are gasketed with continuous bulb gasket for weather tightness.

Insulation: 1" rigid fiber insulation strapped to the curb, lid has fiberglass insulation.

Operation: Torsion spring drives open the covers automatically. Shock absorbers control the speed of the leaves as they open.

Hardware: Heavy gauge aluminum 3/16" pivot hinges. Pull handles are provided for exterior or interior manual operation.

Finish: 2 coats prime coat.

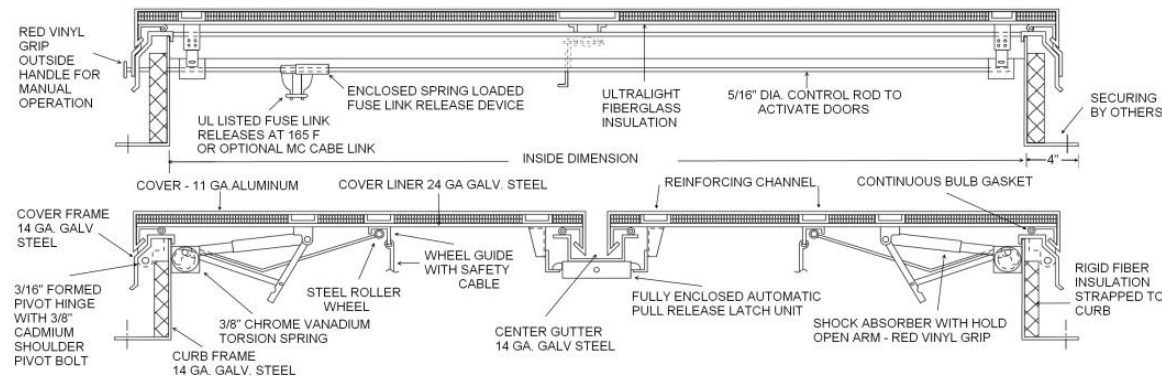
Wind/Live Load & Uplift: Covers shall open against 10 psf (49 kg/m²) snow/wind load. Vent assembly rated for 40 psf (195 kg/m²) live load. Covers will remain closed under 90 psf (438 kg/m²) wind uplift force.

Options at Additional Cost:

☐ McCabe Link ☐ 24 ga galvanized outer curb liner ☐ 370° UL Listed Fuse Link (replaces 165° fuse link)
☐ Security Grille to Fit Opening ☐ Optional color ☐ Gray ☐ Bronze ☐ White

Domed Lid: See separate submittal for UDFV **Polyisocyanurate Insulation:** See separate submittal.

Custom Sizes & Finishes Available - Contact Customer Service



QTY	MODEL	ROOF OPENING Width x Length (hinge side)
	UFV-1	48" x 48"
	UFV-2	48" x 72"
	UFV-3	48" x 90"
	UFV-4	48" x 96"
	UFV-5*	60" x 60" (not UL listed)
	UFV-6*	60" x 96" (not UL listed)
	Other Sizes	



ACTIVAR INC.
CONSTRUCTION PRODUCTS GROUP
UFV™ IS A TRADEMARK OF ACTIVAR
DOWNLOAD CURRENT SUBMITTAL BEFORE ORDERING

Distributor:

Contractor:

Model #:

Project:

Quantity:

Approved By:

Architect:

Date:

© Activar Construction Products Inc 2016

4/11/2016



FOR MORE INFORMATION CALL 1-888-926-1365

Superior Specialty Supply • 9 Council Drive • PO Box 417 • Woodsboro, MD 21798 • www.sssupply.com