



## MEDIUM SECURITY ACCESS DOOR Model DSB-123SD-MS For All Types of Construction



KARP ASSOCIATES, INC.

DATE

### SPECIFICATIONS

#### GENERAL SCOPE:

Access doors shall be Karp Type DSB-123SD-MS as manufactured by Karp Associates, Inc., Melville, N.Y. Sizes shall be as indicated on the drawings.

#### CONSTRUCTION:

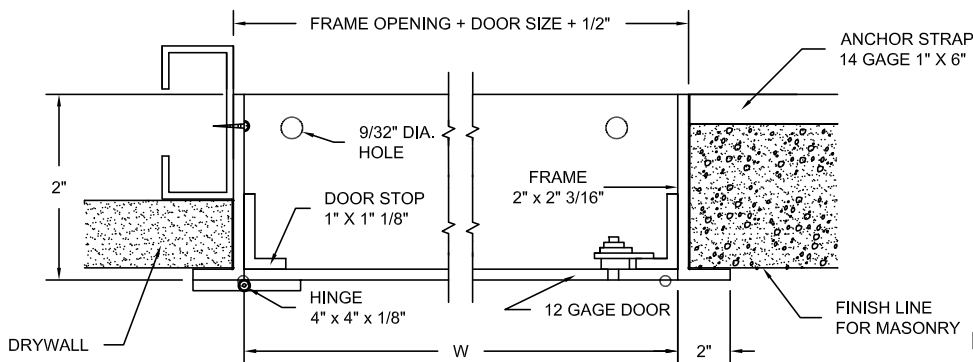
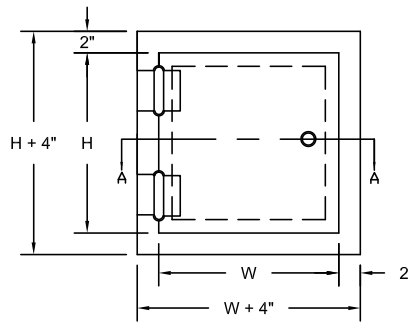
1. Frame shall be 3/16" x 2" x 2" angle welded with joints ground smooth.
2. Flange shall be 2" wide.
3. Door shall be 12 gage steel.
4. Hinges shall be heavy duty and welded to door and frame.
5. Locks shall be flush to finished surface of door and shall be spanner head (tamperproof). Key operated cylinder lock with automatic dust shutter is also available, or doors can be prepped to accommodate rim cylinder locks.
6. 1/4" mounting holes are included on all frames, masonry anchor straps are optional.
7. Finish shall be prime coat of rust inhibitive electrostatic powder, baked white enamel.

#### STANDARD SIZES

DOOR SIZE H X W (IN.)	WALL/CEILING OPENING (IN.)	SHIP WT. (LBS.)
12 x 12	12 1/2 x 12 1/2	24.0
16 x 16	16 1/2 x 16 1/2	32.0
18 x 18	18 1/2 x 18 1/2	36.0
24 x 24	24 1/2 x 24 1/2	52.0
36 x 24	36 1/2 x 24 1/2	68.0
36 x 36	36 1/2 x 36 1/2	95.0

PROJECT DATA					
Project Name:					
Architect:					
Contractor:					
Agent/Customer Name:					
Tagging Instructions:					
Special Instructions:					

PROJECT SCHEDULE					
Qty.	H	W	No. of Latches	Finish	Remarks



Made with Union Labor



**FOR MORE INFORMATION CALL 1-888-926-1365**  
 Superior Specialty Supply • 9 Council Drive • PO Box 417 • Woodsboro, MD 21798 • [www.sssupply.com](http://www.sssupply.com)