



## CEILING ACCESS HATCHES Model KSTE/CAD (Exposed Grid) For Use in Square or Beveled Edge Ceiling Tile

DATE



### SPECIFICATIONS

#### GENERAL SCOPE:

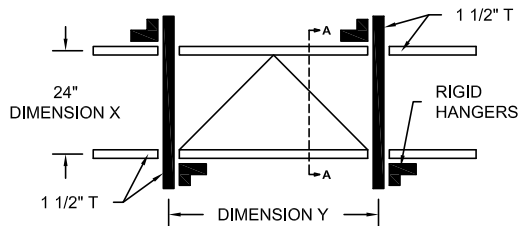
Access doors shall be Karp Type KSTE/CAD as manufactured by Karp Associates, Inc., Melville, N.Y. Sizes shall be as indicated on the drawings.

#### CONSTRUCTION:

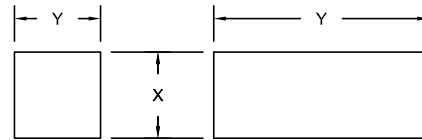
1. Frame shall be 20 gage hot dipped galvanized steel.
2. Door shall be 20 gage electro-galvanized steel with 7/32" flange stove enameled white.
3. Escutcheon caps shall be plastic molded with hinged flaps.
4. Locks shall be budget locks operated with square shanked key.

#### STANDARD SIZES (Special Sizes On Request)

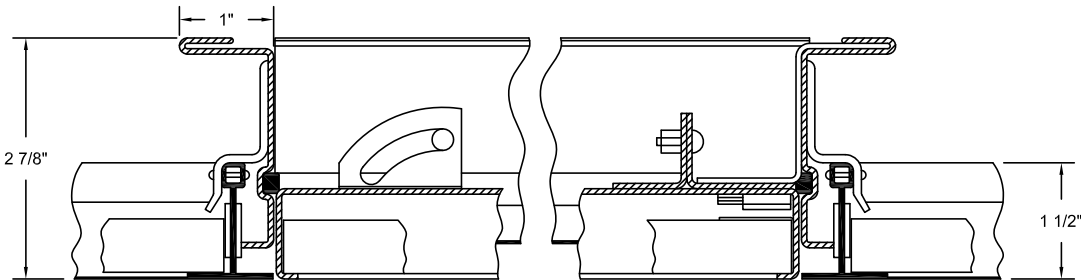
DOOR SIZE (IN.) X Y	SHIP WT. (LBS.)
24 x 24	19,0
24 x 48	35,0



PANEL SUPPORT ILLUSTRATION



OPENING SYSTEMS



SECTION A-A  
SCALE 1:2



Made with Union Labor



**FOR MORE INFORMATION CALL 1-888-926-1365**  
Superior Specialty Supply • 9 Council Drive • PO Box 417 • Woodsboro, MD 21798 • [www.sssupply.com](http://www.sssupply.com)