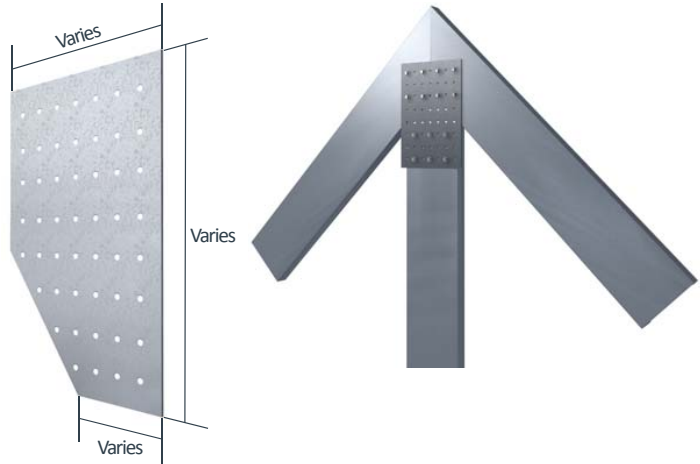


# StiffClip® PL

## Truss Plate Connector

### Material Composition

ASTM A1003/A1003M Structural Grade 50 (340) Type H, ST50H (ST340H): 50ksi (340MPa) minimum yield strength, 65ksi (450MPa) minimum tensile strength, with ASTM A653/A653M G90 (Z275) hot dipped galvanized coating.



### StiffClip PL Allowable Loads

Plates used to connect framing are generally considered as pinned joints. Load transfers through screw or welded connections between members.

### Notes:

- All guide holes may not require fasteners. Number and size of fasteners used is based on fastener manufacturer's allowable load data, and is to be determined by designer.
- Guide holes are 0.172" in diameter unless specified.
- Guide holes have 1/2" minimum edge distance and 1" minimum spacing. Spacing will vary based on plate size and specified project requirements.

### Nomenclature

StiffClip PL is available in many different shapes and is designated as width x length - material thickness.

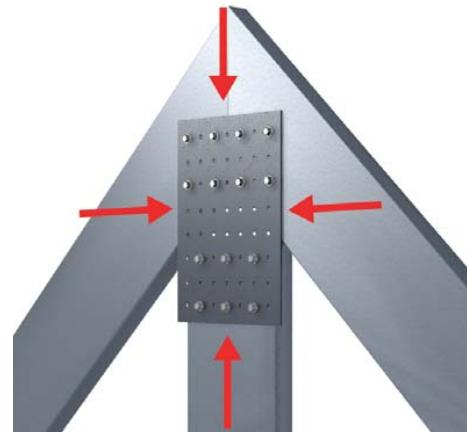
**Example:** 10" wide x 24" long with 68 mil thickness

**Designate:** StiffClip® PL10x24-68

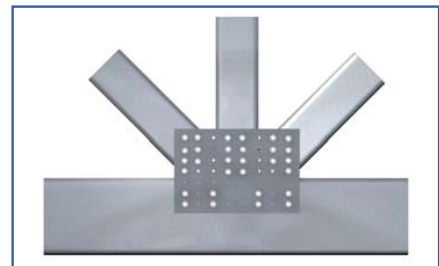
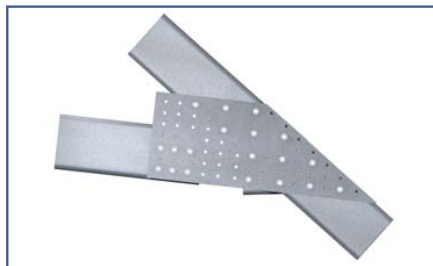
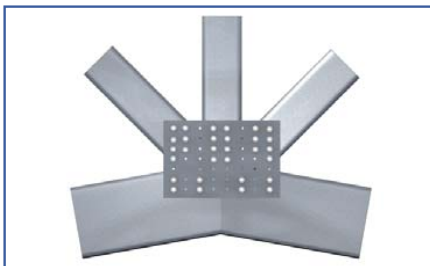
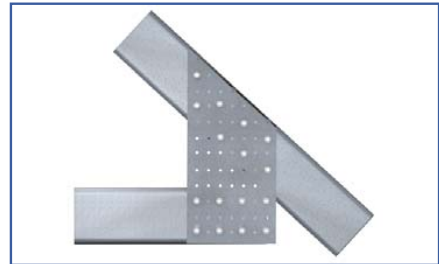
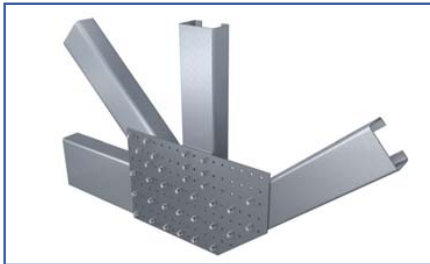
\* Clip sizes vary within each application

\*\*StiffClip PL are typically made to order per project specifications.

### Load Direction



### Example Details



**FOR MORE INFORMATION CALL 1-888-926-1365**  
 Superior Specialty Supply • 9 Council Drive • PO Box 417 • Woodsboro, MD 21798 • [www.sssupply.com](http://www.sssupply.com)