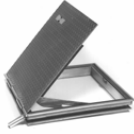




## FLOOR ACCESS DOOR Model KFD-HD Hinged (Watertight)

DATE \_\_\_\_\_



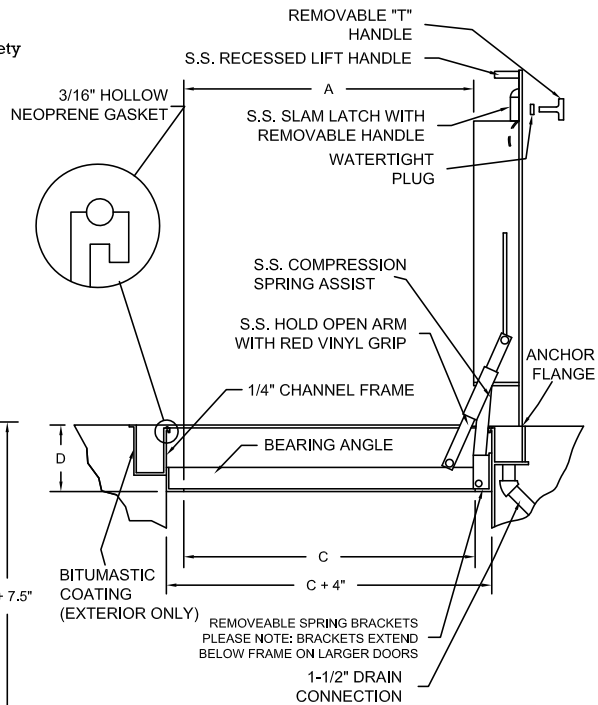
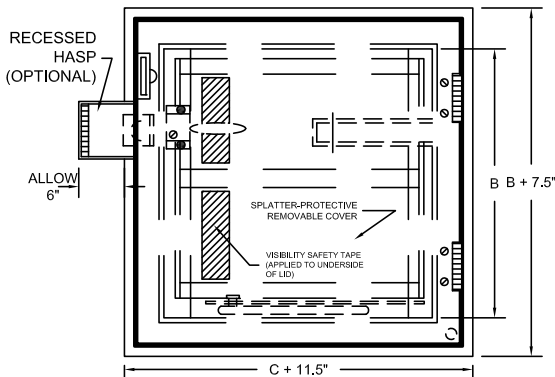
### SPECIFICATIONS

Access door shall be a watertight door as manufactured by Karp Associates, Inc., Melville, NY. Door lid shall be fabricated with 1/4" aluminum diamond plate designed to support a H20 loading (without impact) with a maximum deflection of 1/150th of span. Frame shall be a 1/4" extruded aluminum channel-type frame with a 1/8" neoprene cushion and continuous anchor flange and a 1-1/2" drain coupling welded to the underside. Door shall open 90 degrees and automatically lock in that position with a stainless steel hold open arm with a red vinyl grip. Door lid shall be equipped with a recessed lift handle. Hinges shall be all stainless steel and attached with tamperproof fasteners. All hardware shall be grade 316 stainless steel. Doors shall have a mill finish with a bitumastic coating applied to the exterior of the frame to prevent hydrolysis with concrete. Doors shall be equipped with a stainless steel spring assist which shall provide a smooth and controlled operation when opening and closing door. Operation will not be affected by temperature. Door shall be equipped with a stainless steel slam lock with cover plug and removable handle. Door shall be furnished with a peel-off protective cover to protect finish from concrete splatter. Underside of lid shall have visibility tape applied for safety. Manufacturer shall guarantee material and workmanship for a period of ten years.

OPTIONS: Skirting to depth of slab, fiberglass insulation, safety chains & posts.

LOCK OPTIONS: staple for padlock, recessed hasp, keyed deadbolt lock, pentahead lock.

| MODEL      | "A" | "B" | "C" | "D"  | WT.   |
|------------|-----|-----|-----|------|-------|
| FD2424AHNS | 24" | 24" | 24" | 5.5" | 45 lb |
| FD2430AHNS | 24" | 30" | 24" | 5.5" | 50 lb |
| FD2436AHNS | 24" | 36" | 24" | 5.5" | 55 lb |
| FD2442AHNS | 24" | 42" | 24" | 5.5" | 60 lb |
| FD3030AHNS | 30" | 30" | 31" | 6.5" | 55 lb |
| FD3036AHNS | 30" | 36" | 31" | 6.5" | 60 lb |
| FD3048AHNS | 30" | 48" | 31" | 6.5" | 70 lb |
| FD3636AHNS | 36" | 36" | 37" | 6.5" | 70 lb |
| FD3648AHNS | 36" | 48" | 37" | 6.5" | 85 lb |
| FD4242AHWS | 42" | 42" | 44" | 7.5" | 95 lb |



### NOTE:

ALUMINUM H20 DOORS ARE FOR OFF-STREET LOCATION ONLY.



Made with Union Labor



**FOR MORE INFORMATION CALL 1-888-926-1365**  
 Superior Specialty Supply • 9 Council Drive • PO Box 417 • Woodsboro, MD 21798 • www.sssupply.com