

SUBMITTAL: 1400 LIFESTART™ SERIES AED CABINET

PAGE 1 OF 2

Protect valuable Automated External Defibrillators (AED's) with durable Lifestart cabinets. Each cabinet is equipped with a 85 dB door alarm to deter tampering. This series in steel, stainless steel or aluminum fits most AED's on the market.

Frame, Trim and Door: #4 brushed stainless steel, clear anodized aluminum or steel with white powder-coat finish. 5/8" door stop and continuous hinge.

Trim Style & Depth: *Recessed* – 3/8" flat trim, *Semi-Recessed* – 1-1/2" square edge, 3" or 4" rolled edge (4" has recessed pull), *Surface-Mount* with square or rolled edge.

Door: Formed door with zinc-plated handle and roller catch for F and S21 models. Theft-deterrent SAF-T-LOK™ available on G and L22 models.

Tub: White powder-coated steel except for aluminum and stainless surface-mounted models. Fire-rated available - See Separate Submittal

Alarm: 85 dB Commander (audible) alarm standard with keyed on/off switch on the door.

STEP 1: SELECT MODEL NUMBER AND QUANTITY ON CHART (refer to chart on page 2)

A. Determine Trim Style according to wall depth.

B. Determine Tub I.D. according to size most suited for contents and wall opening.

STEP 2: SELECT DOOR STYLE Check one box below

☐ **F** Full Glazing

☐ **G** Full Glazing with SAF-T-LOK

☐ **V** Vertical Duo

☐ **W** Vertical Duo with SAF-T-LOK

☐ **S21** Solid Door

☐ **L22** Solid Door with SAF-T-LOK

STEP 3: SELECT GLAZING Check one box below

☐ **12** Acrylic

☐ **17** Tempered

Note: Only F12 and G12 combinations have large pre-printed AED heart silk screen graphics - All others include AED diecut lettering as shown below

STEP 4: SELECT OPTIONAL FEATURES AT ADDITIONAL COST

☐ **(SA)** Siren Strobe 110 dB Alarm (3 & 4" Trim & Surface-Mount Models Only)

☐ **(STC)** Saf-T-Clasp for Visual Notification When Door has been opened

☐ **(14MAG)** Magnetic Door Contact for Existing Alarm Systems

☐ **(14RR)** Roller Reed Ball Contact for Existing Alarm Systems

☐ Optional Dark Bronze Anodized Aluminum Finish (Pulls painted to match)

☐ Optional Stainless Steel Finishes ___ #6 ___ #7 View Finishes on website

☐ Optional Tub Color: ___ Black ___ Red ___ Other

☐ Optional Tub Material ___ Stainless ___ Aluminum (to match trim material)

☐ **(PRH)** Flush Pull Handle (Includes AED die cut and decal shown below)

☐ **(PUCH)** Polished Chrome Handle

☐ Optional Color: _____ See page 2 for colors.

☐ Wall Signs: ___ Flat ___ Tent ___ Rt Angle ___ Bi-Lingual ___ Directional
(See separate submittal for more details on these plastic signs)

☐ Etched, Silkscreen or Engraved Lettering - Check here and attach separate submittal

Custom Door Graphics - company logos, photos -Contact Cust. Service
Bronze or Brass Finish - See separate submittal on website.

Automated External Defibrillator sold separately - see website

See website for more information on the above options.

AED die cut (1-1/4" x 5-3/8) and Warning decal (3/4" x 3-1/2") included with all cabinets except F12 and G12



**WARNING
ALARM SYSTEM**



1413F12SA Surface-Mounted Steel Cabinet With Silkscreen AED Graphic & Optional Siren Strobe Alarm



1436F12 Semi-Recessed Cabinet in Stainless Steel with 1-1/2" Square Trim & Silkscreen AED Graphic



JL INDUSTRIES

Distributor:

Contractor:

Model #:

Project:

Quantity:

Approved By:

Architect:

Date:

© 2023 Activar Construction Products Group, Inc.

2/6/2023

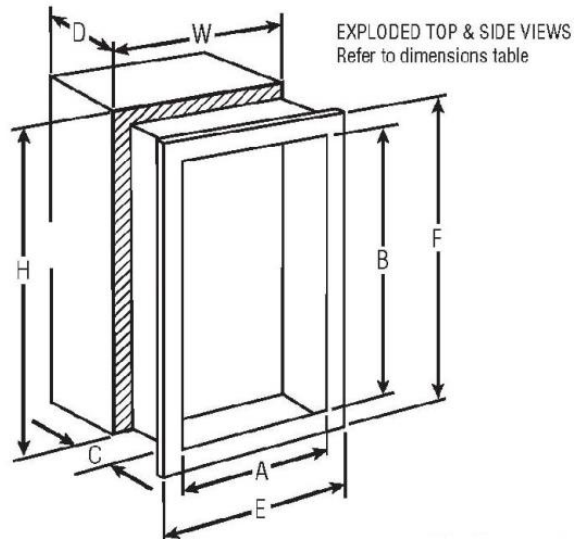


FOR MORE INFORMATION CALL 1-888-926-1365

Superior Specialty Supply • 9 Council Drive • PO Box 417 • Woodsboro, MD 21798 • www.sssupply.com

SUBMITTAL: 1400 LIFESTART™ SERIES AED CABINET

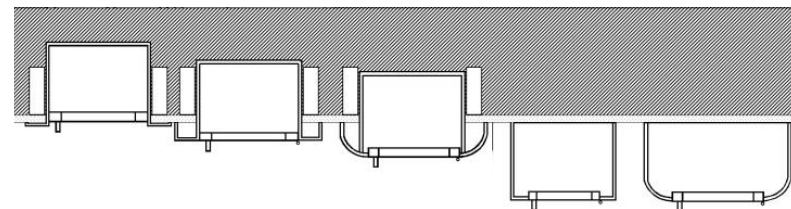
PAGE 2 OF 2



1417F12 3" Rolled Edge Recessed Trim with Silkscreen AED Graphic



1419SA with Custom Graphics & Optional Color



3/8" Flat Trim

1-1/2" Square Trim

2-1/2, 3 or 4" Rolled Edge

Surface Mount Square Edge

Surface Mount Rolled Edge

Optional Colors at Additional Cost - Samples Available			
Gray	Red	Black/Flat Black	Silver
Sand	AMS Beige	SC Flat Beige	Bronze

TRIM & DOOR MATERIAL & SERIES #							TUB I.D.			FRAME O.D.		WALL OPENING		
QTY	STEEL	QTY	ALUMI-NUM	QTY	STAINLESS STEEL	TRIM STYLE	A	B	C	E	F	W	H	D
	1415		1425		1435	3/8" Flat Trim●	14"	14"	6-3/4"	17-3/8"	17-3/8"	15"	15"	6-5/8"
	1416		1426		1436	1-1/2" Square Trim●	14"	14"	6-3/4"	17-3/8"	17-3/8"	15"	15"	5-3/8"
	1417		--		1437	3" Rolled Trim●	14"	14"	6-3/4"	17-3/8"	17-3/8"	15"	15"	3-7/8"
	--		1427		--	2-1/2" Rolled Trim●	14"	14"	6-3/4"	17-3/8"	17-3/8"	15"	15"	5"
	1412		--		1432	4" Rolled Trim/Recessed Pull●	14"	14"	6-3/4"	17-3/8"	17-3/8"	15"	15"	3-1/8"
	--		1422		--	4" Rolled Trim/Recessed Pull●	14"	14"	6-3/4"	17-3/8"	17-3/8"	15"	15"	3-3/4"
	1413		1423		1433	Surface Mounted Square Edge	17-3/16"	17-3/16"	7"	17-3/8"	17-3/8"	--	--	--
	1419		1429		1439	Surface Mounted Rolled Edge	17-3/16"	17-3/16"	7"	17-3/8"	17-3/8"	--	--	--

- Cabinets that Meet 4" Maximum ADA Projection Requirement



FOR MORE INFORMATION CALL 1-888-926-1365

Superior Specialty Supply • 9 Council Drive • PO Box 417 • Woodsboro, MD 21798 • www.sssupply.com