

SUBMITTAL: 3600 SERIES BLANKET & EXTINGUISHER CABINET - STEEL

PAGE 1 OF 2

Door and Trim Construction: Cold rolled steel with white powder-coat finish. Flush cabinet doors with a 5/8" door stop are attached by a continuous hinge and equipped with zinc-plated handle and roller catch. Full glazed front with pull handle.

Trim Style and Depth: *Recessed* - 3/8" Flat Trim. *Semi-Recessed* - 1-1/2" Square Trim or 2-1/2" Rolled Edge. *Surface-Mounted* - has a square edge. 1-3/4" face trim on frame and 1-1/4" trim on door. ADA-compliant models in **blue**.

Tub: Constructed of cold rolled steel with white powder-coat finish standard.

Glazing: .09 Acrylic Glazing

Shelf: Shelf is located 9" from the top of the cabinet, providing storage for the blanket above the extinguisher.

Blanket: Includes a nominal 62" x 80" x 2.75 lb., processed wool/synthetic fire blanket which meets the Flammable Fabrics Act: Flammability of Clothing Textiles, Title 16, CFR1610

Fire Rated Option : See Separate Submittal for FX Model

STEP 1: SELECT DOOR STYLE WITH HANDLE

Check one box below Examples on Page 2

- ☐ **F** Full Glazing in 1-1/4" wide Frame
☐ **G** Full Glazing with SAF-T-LOK™ in 1-1/4" Frame
☐ **D** Horizontal Duo Panel
☐ **E** Horizontal Dual Panel with SAF-T-LOK™
☐ **S21** Solid Door

- ☐ **L22** Solid with SAF-T-LOK™
☐ **L24** Solid with Cylinder Lock - No Handle
☐ **V** Vertical Duo
☐ **W** Vertical Duo with SAF-T-LOK™
☐ **B** Solid with 2" x 4" View Window & SAF-T-LOK™

STEP 2: SELECT DOOR GLAZING

- ☐ **10** Clear Acrylic
☐ **17** Clear Tempered Glass



3617F10

STEP 3: OPTIONAL FEATURES AT ADDITIONAL COST:

- ☐ Color Tub - Red
☐ Color Tub - Black
☐ Color Door/Trim - Red
☐ Color Door/Trim - Black
☐ Other Color Code: _____
☐ (MC) Magnetic Door Catch- Replaces Roller Catch
- ☐ Commander Alarm
☐ Brigadier Alarm
☐ Strobe Alarm (3612, 3618 or 3613. models)
☐ Futura "Fire" Handle
☐ Flush Pull Handle
☐ "Fire Blanket" Letters - Red Horizontal **LDCHRFB**

- ☐ Black Vertical FE Letters **LDCVBFE**
☐ Red Vertical FE Letters **LDCVRFE**
☐ White Vertical FE Letters **LDCVWFE**
☐ Black Horizontal FE Letters **LDCHBFE**
☐ Red Horizontal FE Letters **LDCHRFE**
☐ White Horizontal FE Letters **LDCHWFE**

QTY	TRIM & DOOR & SERIES #		TUB I.D.			FRAME O.D.		WALL OPENING			ACCOMMODATES FOLLOWING EXTINGUISHERS
	Model	Trim Style	A	B	C	E	F	W	H	D	
	3615	Flat Trim	12"	36"	8"	15-3/8"	39-3/8"	13"	37"	7 7/8"	Cosmic & Galaxy 2.5-10, Any Mercury
	3616	1-1/4" Square Edge	12"	36"	8"	15-3/8"	39-3/8"	13"	37"	6 7/8"	
	3617	2-1/2" Rolled Edge	12"	36"	8"	15-3/8"	39-3/8"	13"	37"	5 5/8"	
	3612	4" Rolled Edge - Recessed Pull	12"	36"	8"	15-3/8"	39-3/8"	13"	37"	4 3/8"	Sentinel 5-10, Saturn 15-25, Grenadier P.
	3618	4-1/2" Rolled Edge	12"	36"	8"	15-3/8"	39-3/8"	13"	37"	3 5/8"	Nebula 270
	3613	Surface-Mounted Square	15-3/16"	39-3/16"	8 1/2"	15-3/8"	39-3/8"	---	---	---	

**JL INDUSTRIES**

Distributor:		Project:
Contractor:		Approved By:
Date:	Quantity:	Architect:
Scale: N/A	Pages: 1 of 2	Item #

© 2024 Activar Construction Products Group, Inc.

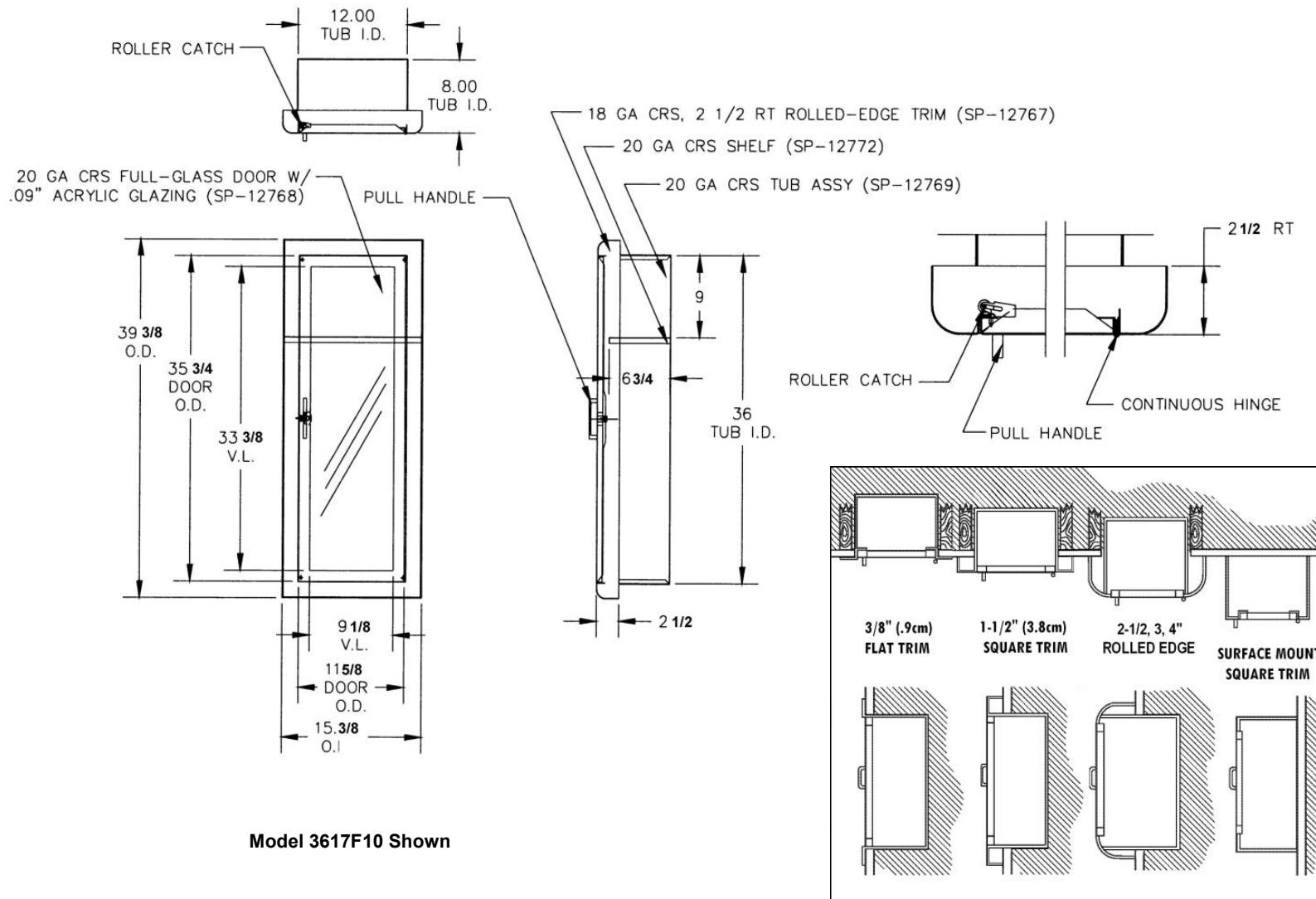
THE INFORMATION CONTAINED IN THIS DOCUMENT IS THE SOLE PROPERTY OF ACTIVAR CONSTRUCTION PRODUCTS GROUP, INC. ANY REPRODUCTION IN PART OR AS A WHOLE WITHOUT THE WRITTEN PERMISSION OF ACTIVAR CONSTRUCTION PRODUCTS GROUP, INC. IS PROHIBITED.

6/15/2023

**FOR MORE INFORMATION CALL 1-888-926-1365**Superior Specialty Supply • 9 Council Drive • PO Box 417 • Woodsboro, MD 21798 • www.sssupply.com

SUBMITTAL: 3600 SERIES BLANKET & EXTINGUISHER CABINET - STEEL

PAGE 2 OF 2



@ 2024 Activar Construction Products Group, Inc.

THE INFORMATION CONTAINED IN THIS DOCUMENT IS THE SOLE PROPERTY OF ACTIVAR CONSTRUCTION PRODUCTS GROUP, INC. ANY REPRODUCTION IN PART OR AS A WHOLE WITHOUT THE WRITTEN PERMISSION OF ACTIVAR CONSTRUCTION PRODUCTS GROUP, INC. IS PROHIBITED.

APRIL 14, 2023



FOR MORE INFORMATION CALL 1-888-926-1365

Superior Specialty Supply • 9 Council Drive • PO Box 417 • Woodsboro, MD 21798 • www.sssupply.com