

SUBMITTAL: FD2D™ SERIES 2 HOUR FIRE-RATED ACCESS PANEL DOUBLE DOOR

The largest two hour ceiling door available on the market, offering architects and engineers unprecedented flexibility in designing. The Maxam double leaf access panel reduces the swing radius and clears objects which interfere with the opening of the door. Tested and listed by Intertek Warnock Hersey for a two hour fire rating.

Materials: Satin finish galvalneal steel or 304 stainless steel

Frame: 16 ga., up to and including 30" x 48". Larger sizes are 14 ga. Removable center mullion. Frame Depth "D" =2 1/4" (57 mm).

Flange: 7/8" (22 mm) up to and including 36" x 36". Larger sizes are 1-1/4" (32mm).

Door Panel: 18 ga. panel with 22 ga liner.

Insulation: The door panel contains 1 1/2" of high temperature insulation material.

Finishes: Rust-inhibitive off-white prime coat or # 4 polished stainless steel finish on exterior surface.

Hinges: Concealed continuous rod hinge. 48" or longer in wall position will be a continuous piano hinge. Stainless models have a stainless steel continuous piano hinge. Hinge is the (H) dimension.

Panel Closer: The automatic panel closer will close & latch the door from an open position of approximately 90° as required by NFPA 80.

Latch: The standard factory installed latch is a flush mount 1/4" allen key. All fire-rated locks are self-latching and include an interior latch release mechanism allowing the doors to be opened from the inside.

Sizes: Minimum size 18" x 12". Maximum size for walls is 48" x 60", maximum for ceilings is 60" x 48".



Intertek Warnock Hersey Listed and Labeled:
 2 Hour Fire Rating for vertical and horizontal installation
 Temp Rise Max: 139°C / 250° F at 30 Min 250° C / 450° F at 60 Min
Testing Standards:
Vertical: NFPA 252, UL 10B, CAN/ULC S104
Horizontal: UBC 43-7

STEP 1: SELECT MODEL NUMBER AND QUANTITY ON CHART PAGE 2 OR ENTER CUSTOM SIZE BELOW

___ " Width x ___ " Height - **Rough opening is order size**

Frame size is 1/4" less than ordering size.

STEP 2: SELECT APPLICATION

___ Wall (FD2DW) ___ Ceiling (FD2DC)

STEP 3: SELECT MATERIAL

___ Satin finish galvalnealed steel ___ 304 No. 4 polished stainless steel on exterior surface.

STEP 4: SELECT LATCH OPTIONS FROM PAGE 3 -5

STEP 5: SELECT OPTIONAL FEATURES AT ADDITIONAL COST

___ Continuous piano Hinge for under 48" panel.

___ Masonry Straps.

Note: Some Lock Options are not included in standard pricing.

LATCH AND LOCK OPTIONS

Standard (A) 1/4" Allen Key	Optional Knurled Knob (KK)	Optional Mor- tise Lock (MPI)

	Distributor:	Quantity:
	Contractor:	Approved By:
	Model #:	Architect:
	Project:	Date: © 2023 Activar Construction Products Group, Inc.
1/16/2023		

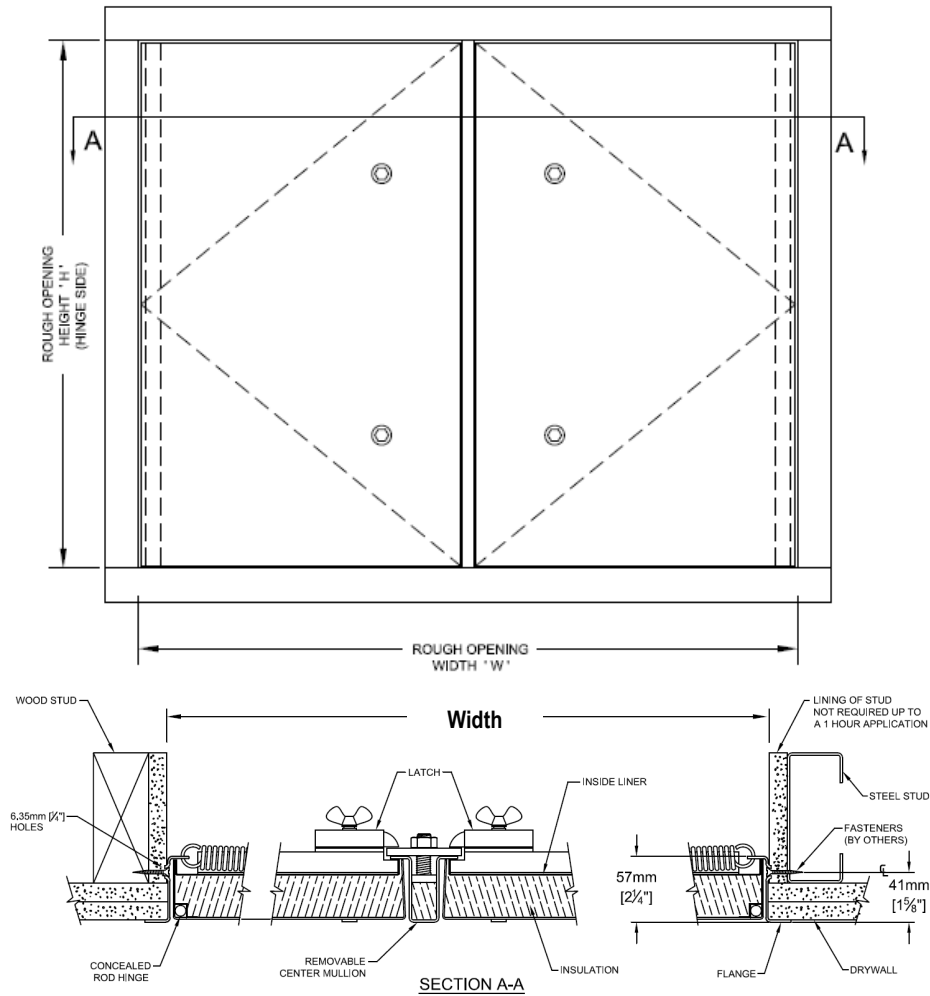


FOR MORE INFORMATION CALL 1-888-926-1365

Superior Specialty Supply • 9 Council Drive • PO Box 417 • Woodsboro, MD 21798 • www.sssupply.com

SUBMITTAL: FD2D SERIES 2 HOUR FIRE-RATED ACCESS PANEL DOUBLE DOOR

QTY	Rough Opening is Order Size W x H (H = Hinge Side)		No. of Latches/Locks	Approx Weight Kgs	Approximate Weight Lbs.
	Inches	Metric(mm)			
2 HR WALLS OR CEILINGS					
	24 x 24	610 x 610	2	25	35
	36 x 48	914 x 1219	2	39	85
	40 x 40	1016 x 1016	2	38	84
	40 x 48	1016 x 1219	4	43	94
	48 x 36	1219 x 914	2	36	79
	48 x 40	1219 x 1016	4	49	107
	48 x 48	1219 x 1219	4	35	78
	60 x 24	1524 x 610	2	41	90
	60 x 30	1524 x 762	2	48	105
	60 x 36	1524 x 914	4	42	93
	60 x 40	1524 x 1016	4	52	114
	60 x 48	1524 x 1219	4	61	135
ADDITIONAL SIZES 2 HR WALL ONLY BELOW					
	24 x 60	610 x 1524	4	34	74
	36 x 60	914 x 1524	4	51	111
	40 x 60	1016 x 1524	4	54	120
	48 x 60	1219 x 1524	4	64	140



Net Opening = Width minus 6" (153mm) , Height minus 1-1/2" (39 mm)

Other sizes available upon request for all Models.

Second dimension given is the hinge side (shown in red) unless otherwise specified

THIS MODEL AVAILABLE IN 3 HOUR RATING - SEE SEPARATE SUBMITTAL

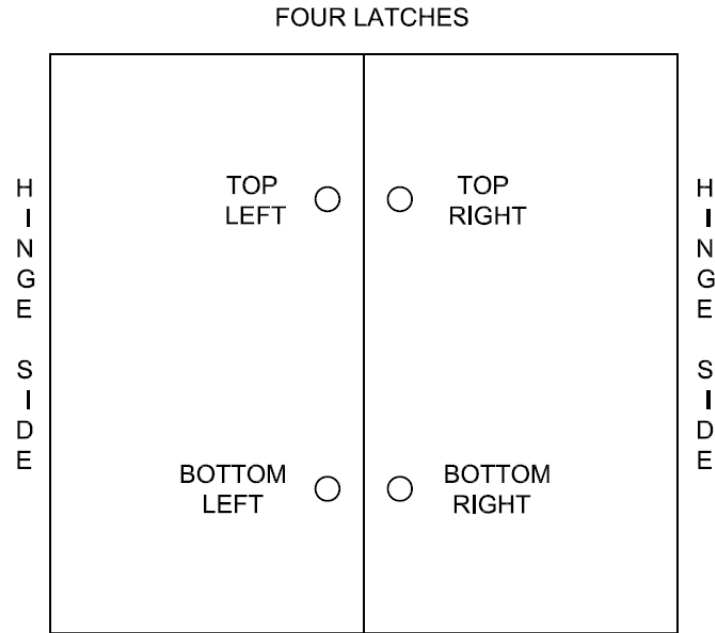
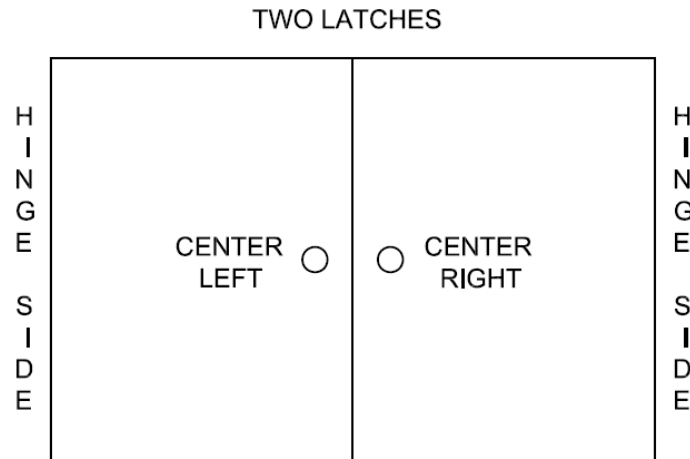


FOR MORE INFORMATION CALL 1-888-926-1365

Superior Specialty Supply • 9 Council Drive • PO Box 417 • Woodsboro, MD 21798 • www.sssupply.com

SUBMITTAL: FD2D SERIES 2 HOUR FIRE-RATED ACCESS PANEL DOUBLE DOOR

SELECT LATCH AND LOCKS BELOW OR ON PAGE 4



Center Left **Latch and Lock Option For Centered Latches** **Center Right**

<input type="checkbox"/>	1/4" Allen Key	<input type="checkbox"/>
<input type="checkbox"/>	Raised Knurled Knob	<input type="checkbox"/>
<input type="checkbox"/>	1-1/8" Mortise Prep*	<input type="checkbox"/>
<input type="checkbox"/>	1-1/8" Mortise Prep with Cylinder*	<input type="checkbox"/>
<input type="checkbox"/>	Concealed Operator One Side Only - Select Operator for Other Side from Above Options	<input type="checkbox"/>

Top Left **Latch and Lock Options For 4 Latches** **Top Right**

<input type="checkbox"/>	1/4" Allen Key	<input type="checkbox"/>
<input type="checkbox"/>	Raised Knurled Knob	<input type="checkbox"/>
<input type="checkbox"/>	1-1/8" Mortise Prep*	<input type="checkbox"/>
<input type="checkbox"/>	1-1/8" Mortise Prep with Cylinder*	<input type="checkbox"/>
<input type="checkbox"/>	Concealed Operator One Side Only - Select Operator for Other Side from Above Options	<input type="checkbox"/>

Bottom Left

<input type="checkbox"/>	1/4" Allen Key	<input type="checkbox"/>
<input type="checkbox"/>	Raised Knurled Knob	<input type="checkbox"/>
<input type="checkbox"/>	1-1/8" Mortise Prep*	<input type="checkbox"/>
<input type="checkbox"/>	1-1/8" Mortise Prep with Cylinder*	<input type="checkbox"/>
<input type="checkbox"/>	Concealed Operator One Side Only - Select Operator for Other Side from Above Options	<input type="checkbox"/>

Bottom Right

* Lock Option at Additional Cost

Example: If Concealed Operator is on Left Door, Select Top Right and Bottom Right Latch/Lock Options



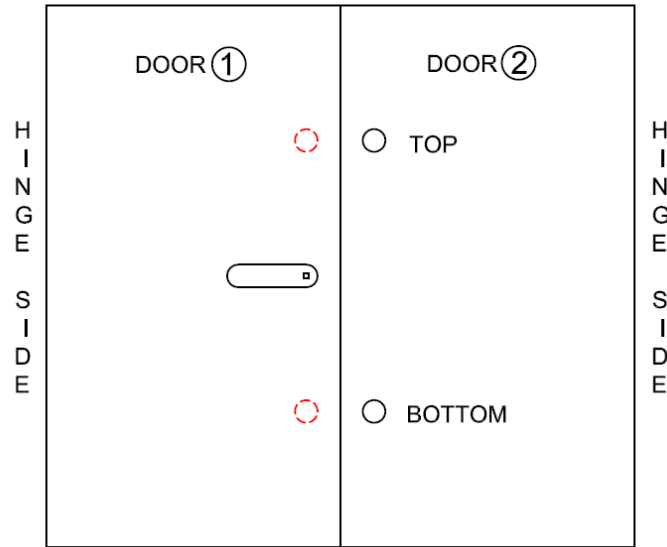
FOR MORE INFORMATION CALL 1-888-926-1365

Superior Specialty Supply • 9 Council Drive • PO Box 417 • Woodsboro, MD 21798 • www.sssupply.com

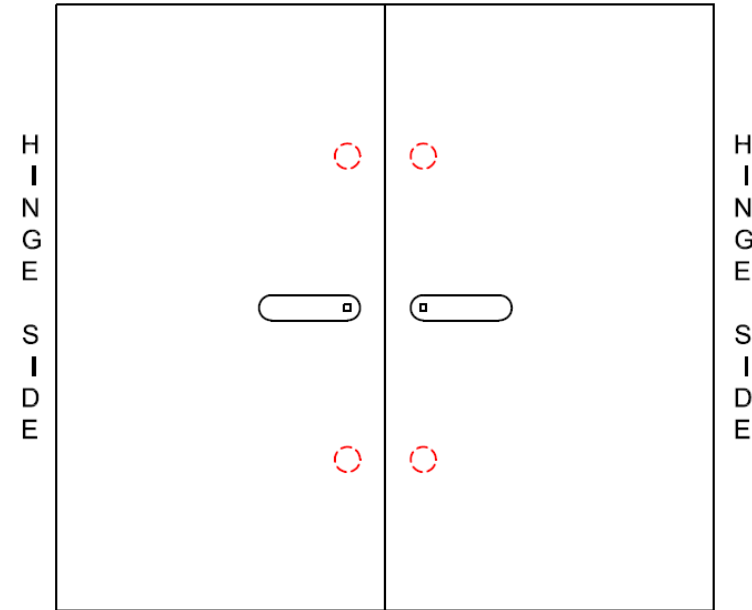
SUBMITTAL: FD2D SERIES 2 HOUR FIRE-RATED ACCESS PANEL DOUBLE DOOR

SELECT LATCH AND LOCKS BELOW OR ON PAGE 3

ONE CENTRAL POINT HANDLE - FOUR LATCHES



TWO CENTRAL POINT HANDLES - FOUR LATCHES



DOOR 1: Central Point Handle Controls

Two Concealed Latches on Door (shown in red)

DOOR 2: Latch and Lock Options:

Latch and Lock Option	Top Right
Raised Knurled Knob	
1-1/8" Mortise Prep*	
1-1/8" Mortise Prep with Cylinder*	
Latch and Lock Option	Bottom Right
Raised Knurled Knob	
1-1/8" Mortise Prep*	
1-1/8" Mortise Prep with Cylinder*	

 Central Point Handle Controls on Both Doors
Two Concealed Latches on Each Door

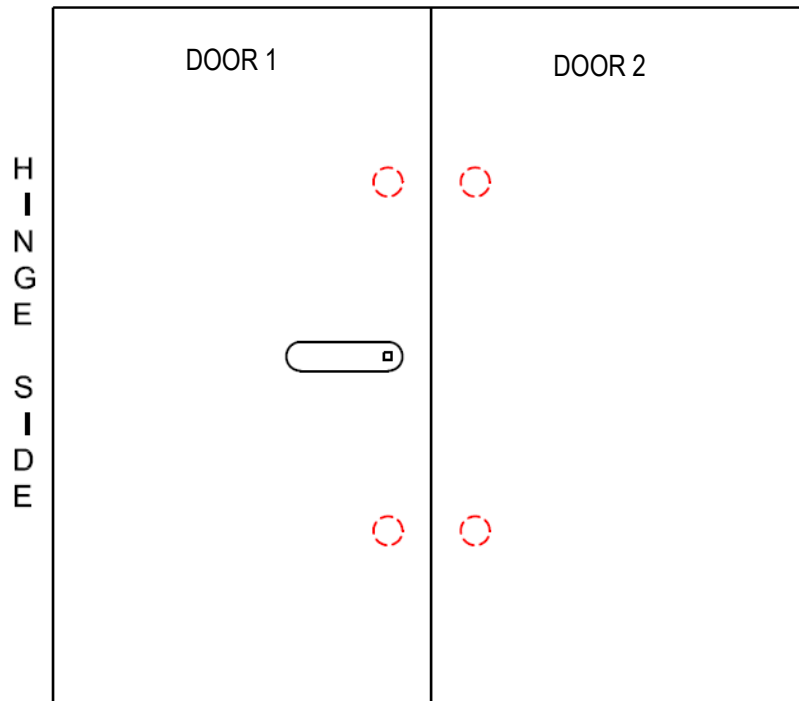
* Lock Option at Additional Cost



FOR MORE INFORMATION CALL 1-888-926-1365

Superior Specialty Supply • 9 Council Drive • PO Box 417 • Woodsboro, MD 21798 • www.sssupply.com

ONE CENTRAL POINT HANDLE - FOUR LATCHES



DOOR 1

Central Point Handle Controls Two Concealed Latches on Door.

DOOR 2

Two Concealed Latches on Door, Operable from the Inside Only.



FOR MORE INFORMATION CALL 1-888-926-1365

Superior Specialty Supply • 9 Council Drive • PO Box 417 • Woodsboro, MD 21798 • www.sssupply.com