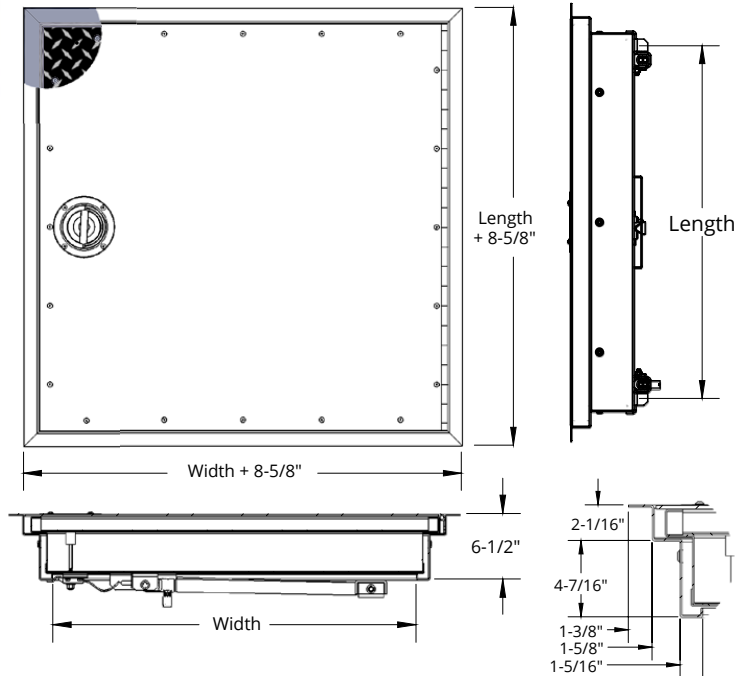


## FLOOR DOOR - FHD SERIES - 3 HOUR FIRE-RATED FHD3R

Our FHD floor doors are designed to control the transmission of heat and flames when installed in a floor-ceiling assembly with a maximum temperature rise of 250 degrees Fahrenheit (121.1 degrees Celsius) for the specified rating periods of 3 hours.



### SPECIFICATIONS:

**Frame Material:** 12 gauge (2.75 mm) galvaneal steel with ash gray primer

**Door Material:** 1/4" (6.35 mm) Aluminum tread plate with mill finish and 14 gauge (1.99mm) galvaneal steel frame and liner with ash gray primer

**Insulation:** High temperature ceramic fiber insulation

**Hinge:** Continuous stainless steel hinge

**Latch:** Stainless steel slam latch operated by a stainless steel recessed turn handle topside.

**Spring/Cylinder:** 316 stainless steel gas spring cylinders

**Self Closing Mechanism:** 165 degrees Fahrenheit (74 degrees Celsius) fusible link melts during fire automatically closing door without warning by releasing gas in cylinders. Not available on sizes larger than 42" (1067 mm) x 60" (1524 mm).

**Installation Kit:** Includes anchor straps for installing into concrete and screws for wood frame installations

**Live Load:** 150 lbs/sq ft (700 kg/sq metre)

### Sizes:

**Minimum Size:** 26" x 24" (660 mm x 610 mm)

**Maximum Size 3 Hour:** 42" x 60" (1067 mm x 1524 mm) or 48" x 48" (1219 mm x 1219 mm)

### Clear Opening:

**Size width up to 30":** Width minus 12" (305 mm) x Length

**Size width over 30":** Width minus 8.25" (210 mm) x Length

### FIRE-RATING:

QAI Laboratories listed and labeled to NFPA-288 for 1, 2 and 3 hours for horizontal fire door assemblies

**Testing Standards:** NFPA 288

| COMMON SIZES FHD3R |                                   |            |               |     |     |                                   |             |                |     |
|--------------------|-----------------------------------|------------|---------------|-----|-----|-----------------------------------|-------------|----------------|-----|
| QTY                | ORDER SIZE W x L (Inside Opening) |            | APPROX WEIGHT |     | QTY | ORDER SIZE W x L (Inside Opening) |             | APPROX WEIGHT* |     |
|                    | inches                            | mm         | kg            | lb  |     | inches                            | mm          | kg             | lb  |
|                    | 26 x 24                           | 660 x 610  | 58.97         | 130 |     | 36 x 48                           | 914 x 1219  | 163.30         | 360 |
|                    | 30 x 30                           | 762 x 762  | 85.28         | 188 |     | 36 x 54                           | 914 x 1372  | 183.71         | 405 |
|                    | 30 x 48                           | 762 x 1219 | 136.08        | 300 |     | 42 x 42                           | 1067 x 1067 | 167.83         | 368 |
|                    | 36 x 24                           | 914 x 762  | 81.65         | 180 |     | 42 x 60                           | 1067 x 1524 | 233.60         | 525 |
|                    | 36 x 30                           | 914 x 762  | 102.06        | 225 |     | * 48 x 48                         | 1219 x 1219 | 218            | 480 |
|                    | 36 x 36                           | 914 x 914  | 123           | 270 |     |                                   |             |                |     |

More Sizes Available Upon Request. \*Self Closing Mechanism NOT available in this size.

|  |              |               |              |  |
|--|--------------|---------------|--------------|--|
| <p>CANADA ONLY: 604-433-4243 info@maxammetal.com maxammetal.com</p> <p>© 2024 Activar Construction Products Group, Inc. THE INFORMATION CONTAINED IN THIS DRAWING IS THE SOLE PROPERTY OF ACTIVAR CONSTRUCTION PRODUCTS, INC. ANY REPRODUCTION IN PART OR AS A WHOLE WITHOUT WRITTEN PERMISSION IS PROHIBITED.</p> | Distributor: |               | Project:     |  |
|  | Contractor:  |               | Approved By: |  |
|  | Date:        |               | Architect:   |  |
|  | Scale: N/A   | Pages: 1 of 3 | Item #:      |  |

1-05-2024

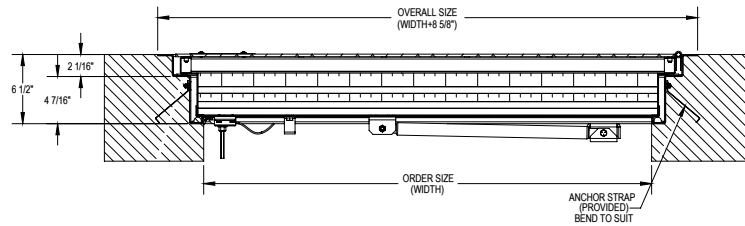


**FOR MORE INFORMATION CALL 1-888-926-1365**

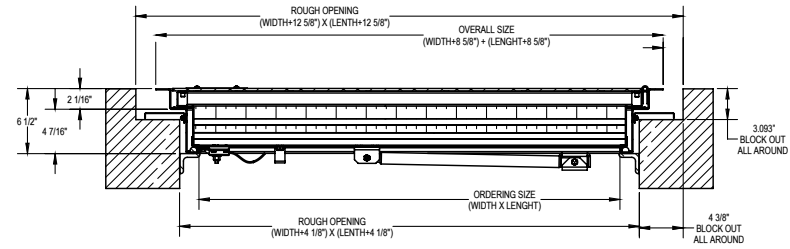
Superior Specialty Supply • 9 Council Drive • PO Box 417 • Woodsboro, MD 21798 • www.sssupply.com

## FLOOR DOOR - FHD SERIES - 3 HOUR FIRE-RATED FHD3R

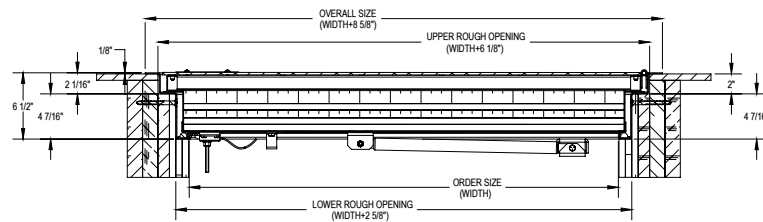
### INSTALLATION: CONCRETE FHD SERIES - CAST-IN-PLACE



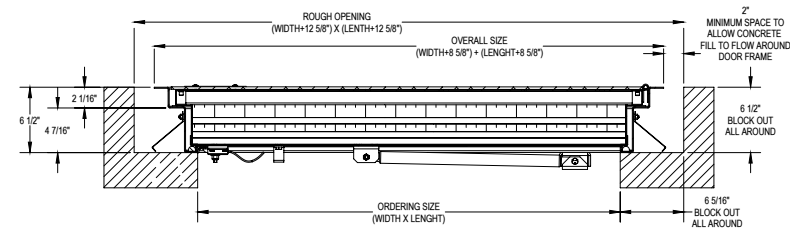
### INSTALLATION: CONCRETE FHD SERIES - RETROFIT 1



### INSTALLATION: WOOD FRAMING FHD SERIES (1 & 2 HOUR ONLY)



### INSTALLATION: CONCRETE FHD SERIES - RETROFIT 2



See installation instructions for more detail

### MADE-TO-ORDER FIRE-RATED FLOOR DOOR - FHD SERIES: INSULATED - EXAMPLE: FHD3RAT-3648U1PA

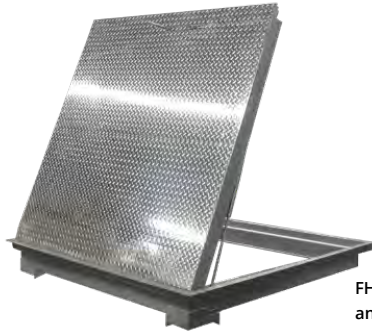
| QTY | MODEL | FIRE-RATING | DOOR MATERIAL   | WIDTH | LENGTH | LATCH / LOCK   | FINISH                                     | OPTIONS  |
|-----|-------|-------------|---|-------|--------|--|--|--|
|     | FHD   | 3R 3-Hour   | <b>AT</b> (1/4" Aluminum Tread Plate; std)<br><b>AP</b> (1/4" Aluminum Smooth Plate)<br><b>AR</b> (3/16" Aluminum Smooth Plate Recessed)<br><b>GT</b> (3/16" Steel Tread Plate) |       |        | <b>U1</b> (Recessed turn handle top slam latch bottom)<br><b>U2</b> (Removable tool and plug top slam latch bottom)<br><b>J2</b> (Detention slam lock # Brinks 7066K-RH keyed top, door knob bottom) | <b>PA</b> (Primer, ash gray on steel; Std) | <b>BT</b> (Bituminous coating on frame exterior exposed to concrete)<br><b>PH</b> (Padlock hasp on bottom)<br><b>SN</b> (No self-closing mechanism at 165F)<br><b>YB</b> (Door painted yellow with black letters: "FIRE DOOR DO NOT STORE MATERIALS/EQUIPMENT ON SURFACE") |



**FOR MORE INFORMATION CALL 1-888-926-1365**

**Superior Specialty Supply • 9 Council Drive • PO Box 417 • Woodsboro, MD 21798 • www.sssupply.com**

**FLOOR DOOR - FHD SERIES - 3 HOUR FIRE-RATED FHD3R**

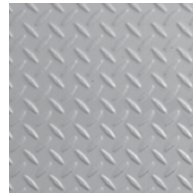


FHD with Standard 1/4"(6.35 mm) Aluminum Tread Plate and Optional Removable Tool

**FLOOR DOOR OPTIONAL MATERIAL, LOCKS, LATCHES, HARDWARE, AND COLOR**



1/4" (6.35 mm) Aluminum Tread Plate (Standard)



3/16" (4.78 mm) Steel Tread Plate



1/4" (6.35 mm) Smooth Aluminum Plate



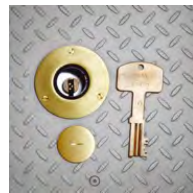
Smooth Aluminum Recessed for 3/16" (6.35 mm) to accept flooring



Painted Lettering: Door panel painted in optional yellow with "FIRE DOOR DO NOT STORE MATERIALS/EQUIPMENT ON SURFACE" in black lettering



Recessed Stainless Steel Turn Handle Topside (Standard)



Detention Lock showing Topside Lock and Key



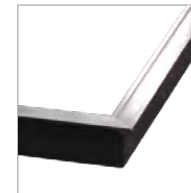
Detention Lock showing Underside Operable Knob



Padlock Hasp Underside



316 Stainless Steel Slam Latch with Topside Removable Tool and Underside Spoon Handle



Bituminous Coating

It is the responsibility of the customer to communicate specifications and product performance requirements that are needed for their application. This document is intended to convey potential product configurations and offerings. It is not to be used to imply or represent a specification or rating, of finished products shipped. Detailed, specific submittals can be created upon request. It is the responsibility of the customer to specify product accordingly to comply with local laws, codes, and ordinances.

© 2024 Activar Construction Products Group, Inc.



**FOR MORE INFORMATION CALL 1-888-926-1365**

**Superior Specialty Supply • 9 Council Drive • PO Box 417 • Woodsboro, MD 21798 • www.sssupply.com**