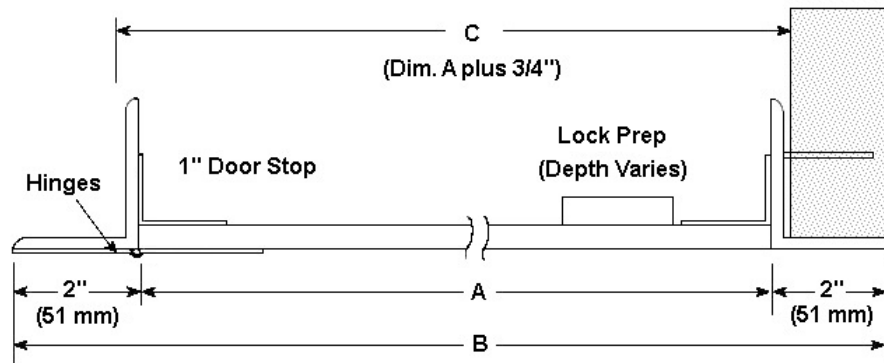


## SUBMITTAL: HIGH SECURITY ACCESS PANELS - MODEL HSP™

For the most heavy-duty security access panel, our 7 gauge HSP can provide you with the solid construction and lock options for many detention and security building applications. From the heavy-duty hinges with non-removable barrels to the welded frame construction, we offer a specialty access door to meet your needs.



### SPECIFICATIONS:

**Frame:** 2" x 3" x 3/16" steel angle frame with 2" flange, welded at corners.

**Door:** 7 gauge box-formed steel door mounted on two heavy-duty 4" butt hinges welded to the frame.

**Finish:** White powder coat paint.

**Anchors:** Heavy duty steel masonry anchors welded to frame at factory.

**Locks:** See page 2 and 3 for lock and prep options.

**Sizes:** Minimum Size 8" x 8" (20.3 x 20.3 cm)

*Maximum Size Wall:* 48" x 48" (121.9 x 121.9 cm) or other dimensions up to 1296 in<sup>2</sup> (32.9 cm<sup>2</sup>).

*Maximum Size Ceiling:* 24" x 24" (71.1 x 71.1 cm)

**Order Size = Door Size**

**Wall Opening = Order Size Plus 3/4"**

WALL AND CEILING SIZES & WALL OPENING TABLE—PLEASE USE SELECTION TABLE PAGE 2, TO ORDER						
A - DOOR SIZE W X H	B - OUTSIDE FRAME DIMENSION in/mm		C - WALL OPENING in/mm		SHIP WT APPROX lb/Kg	LOCK
	Inches (mm)	WIDTH	HEIGHT	WIDTH		
08 x 08 (203 x 203)	12 (305)	12 (305)	8 ¾ (222)	8 ¾ (222)	20 (9)	1
10 x 10 (254 x 254)	14 (356)	14 (356)	10 ¾ (273)	10 ¾ (273)	25 (11)	1
12 x 12 (305 x 305)	16 (406)	16 (406)	12 ¾ (324)	12 ¾ (324)	30 (14)	1
14 x 14 (356 x 356)	18 (457)	18 (457)	14 ¾ (375)	14 ¾ (375)	36 (16)	1
16 x 16 (406 x 406)	20 (508)	20 (508)	16 ¾ (425)	16 ¾ (425)	40 (18)	1
18 x 18 (457 x 457)	22 (559)	22 (559)	18 ¾ (476)	18 ¾ (476)	47 (21)	1
24 x 24 (610 x 610)	28 (711)	28 (711)	24 ¾ (629)	24 ¾ (629)	65 (29)	1
WALL ONLY SIZES						
24 x 36 (610 x 914)	28 (711)	40 (1016)	24¾ (629)	36¾ (933)	90 (41)	1
24 x 48 (610 x 1219)	28 (711)	52 (1321)	24¾ (629)	48¾ (1238)	112 (51)	1



9HSP-1616DSPI-25G



Distributor:		Project:
Contractor:		Approved By:
Date:	Quantity:	Architect:
Scale: N/A	Pages: 1 of 3	Item #



**FOR MORE INFORMATION CALL 1-888-926-1365**

Superior Specialty Supply • 9 Council Drive • PO Box 417 • Woodsboro, MD 21798 • [www.sssupply.com](http://www.sssupply.com)

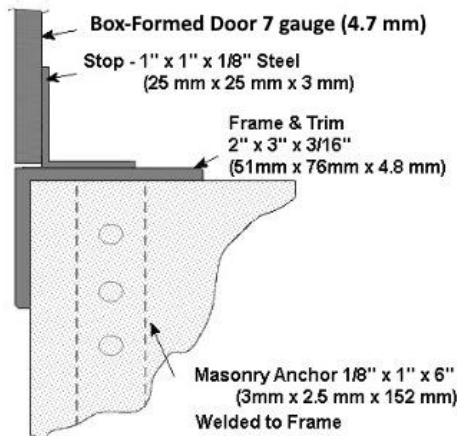
**SUBMITTAL: HIGH SECURITY ACCESS PANELS - MODEL HSP™**

Example: 9HSP-1616DSPI-25R

Qty	Material	Width x Height	Lock Type	Powder Coat Paint Color
<input type="text"/>	9HSP Steel 7 ga	8" 8"	MCP	<input type="text"/> W White Powder Coat (Std)
<input type="text"/>	9HSPSS 304 Stainless #4, 7 ga	10" 10"	MCP-02 Mortise Cam Latch	<input type="text"/> Other Powder Coat
		12" 12"		<input type="text"/> Color Code
		14" 14"	MDP	
		16" 16"	MDP-03 Mortise Deadbolt	
		18" 18"	MDP-07	
		24" 24"		
		24" 36"	DSPP-25	
		24" 48"	DSPI-25 Detention Slam Lock	
			DDPP-17	
			DDPI-17 Detention Deadbolt	
			MLPP-19	
			MLPI-19 Mogul Detention Deadbolt	

**Note:** For other locks not listed (prepped or installed), manufacturer may require a sample of the lock. See page 3 for more lock details

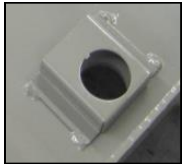
**CONSTRUCTION DETAIL**



**FOR MORE INFORMATION CALL 1-888-926-1365**

Superior Specialty Supply • 9 Council Drive • PO Box 417 • Woodsboro, MD 21798 • [www.sssupply.com](http://www.sssupply.com)

**SUBMITTAL: HIGH SECURITY ACCESS PANELS - MODEL HSP™**



**MORTISE CAM LATCH**

**MCP:** Prepped for mortise cylinder lock by others. Cylinder lock must be: 1-1/8" diameter x 1-1/4" long mortise cylinder with standard cam. Cylinders by others require threaded locknut ring.

**MCP-02:** Includes installed mortise cylinder Kaba Ilco 7205SC1, 1-1/8" Dia x 1-1/4" long mortise cylinder with standard cam (PN: 06431), 2 keys (PN: 06431-KEY) and lock nut ring (PN: 0646).

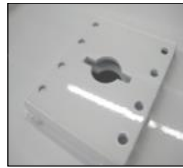


**MORTISE DEADBOLT**

**MDP:** Prepped for mortise deadbolt cylinder lock by others. Cylinder lock must be: 1-1/8" diameter x 1-1/4" long mortise cylinder with Adams Rite cam. Longer lengths require adjustable lock collar (PN: SL-ALC).

**MDP-03:** Includes installed Kaba Ilco 7205SC2, 1-1/8" x 1-1/4" long mortise cylinder with Adams Rite cam (PN: 06441) and includes 2 keys (PN: 06431-KEY).

**MDP-07:** Includes installed temporary construction core mortise deadbolt cylinder Best 1E74C181RP3626, 1-1/8" Dia x 1-1/4" long mortise cylinder with C181 Adam Rite cam (PN: SL-1E74). Operation key (PN: 040004) & control key (PN: 040005) to remove the construction core ordered separately.



**DETENTION SLAM LOCK**

**DSPP-25:** Prepped for detention slam lock Airteq 5017 with standard bevel by others.

**DSPI-25:** Includes installed Airteq 5017 medium security for slam-locking with stainless steel latchbolt 1" x 7/16" bolt throw (PN: DDI-5017). Keys sold separately (PN: DDK-5017).



**DETENTION DEADBOLT**

**DDPP-17:** Prepped for detention deadbolt lock Airteq 5010. This mounting also accommodates Southern Folger 1010A.

**DDPI-17:** Includes installed Airteq 5010, medium security deadbolt, with zinc plated steel bolt 1-1/2" x 3/4" and 5/8" bolt throw (PN: DDI-5010). Keys sold separately (PN: DDK-5010).



**DETENTION DEADBOLT MOGUL LOCK**

**MLPP-19:** Prepped for detention deadbolt with mogul cylinder Airteq 5010M.

**MLPI-19:** Includes installed Airteq 5010M medium security deadbolt with mogul key cylinder, zinc plated steel bolt 1-1/2" x 1/2" and 5/8" throw (PN: DDI-5010M). Includes 2 keys (PN: DDK-5010M).

It is the responsibility of the customer to communicate specifications and product performance requirements that are needed for their application. This document is intended to convey potential product configurations and offerings. It is not to be used to imply or represent a specification or rating, of finished products shipped. Detailed, specific submittals can be created upon request. It is the responsibility of the customer to specify product accordingly to comply with local laws, codes, and ordinances.

