

SUBMITTAL: PANORAMA™ FIRE-FX2™ STAINLESS STEEL FIRE RATED EXTINGUISHER CABINETS

The Panorama Cabinet Features a Frameless Door of Clear Polycarbonate or Opaque Textured Acrylic with Many Lettering Options

Door & Trim Construction: Flush acrylic cabinet doors are attached by a continuous hinge and equipped with zinc-plated handle and roller catch. 1-3/4" trim on cabinet has #4 stainless steel finish.

Trim Style & Depth: Trimless Recessed - See Separate Submittal, Recessed 3/8" flat trim, Semi Recessed - 1-1/4", 1-1/2" Square Edge or 2-1/2", 3", 4", 4-1/2" Rolled Edge (4" has recessed pull).

Tub: The tub is constructed of cold rolled steel with white powder-coat finish standard. Tub forms a flange to cover cut edges of wallboard material. Fire-resistant material is attached to the exterior of the tub.

Fire-Rated Option Available: Yes - See separate Submittal Form.

Fire Rating: Fire-FX2™ cabinets are UL listed and labeled as an approved membrane penetration firestop system for up to 2 hours in accordance with UL 1479 (ASTM-E814) and CAN/ULC-S115, when properly installed in a wall assembly according to installation instructions.

STEP 1: SELECT MODEL NUMBER, MATERIAL AND QUANTITY ON CHART (refer to chart on pg 2)

A. Determine Trim Style according to wall depth. B. Determine Tub I.D. according to size most suited for extinguisher and wall opening.

STEP 2: SELECT DOOR STYLE

(Check one box below)

C70 Clear 3/16" Unlettered Smooth Polycarbonate

P Identity: 3/16" Textured Obscure Acrylic with Lettering

C71 Clear 3/16" Unlettered Smooth Polycarbonate & Saf-T-Lok™

Q Identity: 3/16" Textured Obscure Acrylic with Lettering & Saf-T-Lok

STEP 3 - P&Q DOORS SELECT LETTERING STYLE

View lettering styles on page 2

40 Vert, Black Bkgd, White Lettering	45 Horiz, Black Bkgd, White Lettering	50 Ascend, Black Bkgd, White Lettering
41 Vert, Red Bkgd, White Lettering	46 Horiz, Red Bkgd, White Lettering	51 Ascend, Red Bkgd, White Lettering
42 Vert, White Bkgd, Black Lettering	47 Horiz, White Bkgd, Black Lettering	52 Ascend, White Bkgd, Black Lettering
43 Vert, White Bkgd, Red Lettering	48 Horiz, White Bkgd, Red Lettering	53 Ascend, White Bkgd, Red Lettering

STEP 4: OPTIONAL FEATURES AT ADDED COST (SELECT ANY)

Futura "Fire" Handle ___ Mill Aluminum (PUF) ___ Red ___ White

(CA) Commander Alarm

Flush Pull Handle for P and Q Door Styles (PRH)

(BA) Brigadier Alarm

Polished Chrome Pull (PUCH)

Optional Tub Color: ___ Black ___ Red

Other Stainless Finish: ___ #6 ___ #7 ___ #8

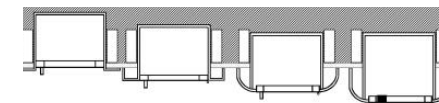
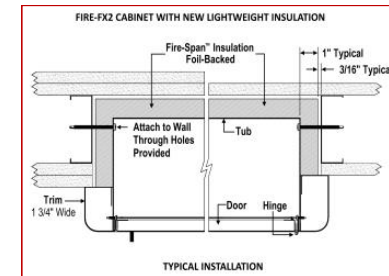
#4 Stainless Tub



1036C70FX2



1038Q43FX2



3/8" Flat Trim 1-1/2" Square Trim 2-1/2", 3" Rolled Edge 4" Rolled Edge with Recessed Pull Standard

It is the responsibility of the customer to communicate specifications and product performance requirements that are needed for their application. This document is intended to convey potential product configurations and offerings. It is not to be used to imply or represent a specification or rating, of finished products shipped. Detailed, specific submittals can be created upon request. It is the responsibility of the customer to specify product accordingly to comply with local laws, codes, and ordinances.

	Distributor:	Quantity:
	Contractor:	Approved By:
	Model #:	Architect:
	Project:	Date: © 2023 Activar Construction Products Inc
5/30/22		



FOR MORE INFORMATION CALL 1-888-926-1365

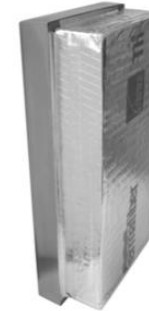
Superior Specialty Supply • 9 Council Drive • PO Box 417 • Woodsboro, MD 21798 • www.sssupply.com

SUBMITTAL: PANORAMA STAINLESS FX2 EXTINGUISHER CABINETS

TRIM & DOOR SERIES #			Tub I.D.			Frame O.D.		FX Wall Opening			Fits
QTY	Model	Trim Style (in)	A	B	C	E	F	W	H	D	
	8135	Flat trim	9	18	5 1/2	12 3/8	21 3/8	11 5/16	20 5/16	6 7/16	Cosmic & Galaxy 2 1/2-5-1/2 Mercury 2 1/2-5
	8136	1 1/2 Square	9	18	5 1/2	12 3/8	21 3/8	11 5/16	20 5/16	5 3/16	
	8137	2 1/2 Rolled	9	18	5 1/2	12 3/8	21 3/8	11 5/16	20 5/16	4	
	1835	Flat trim	10 1/2	24	5 1/2	13 7/8	27 3/8	12 13/16	26 5/16	6 7/16	Cosmic & Galaxy 2 1/2-5-1/2 Mercury 2 1/2-5
	1836	1 1/2 Square	10 1/2	24	5 1/2	13 7/8	27 3/8	12 13/16	26 5/16	5 3/16	
	1837	3 Rolled	10 1/2	24	5 1/2	13 7/8	27 3/8	12 13/16	26 5/16	3 5/8	
	1832	4 Rolled/Flush Pull	10 1/2	24	5 1/2	13 7/8	27 3/8	12 13/16	26 5/16	2 7/8	
	1838	4 1/2 Rolled	10 1/2	24	5 1/2	13 7/8	27 3/8	12 13/16	26 5/16	2 3/16	
	1035	Flat trim	10 1/2	24	6	13 7/8	27 3/8	12 13/16	26 5/16	6 15/16	
	1036	1 1/2 Square	10 1/2	24	6	13 7/8	27 3/8	12 13/16	26 5/16	5 11/16	Cosmic & Galaxy 2 1/2-10 Mercury 2 1/2-5, Sentinel 5
	1037	3 Rolled	10 1/2	24	6	13 7/8	27 3/8	12 13/16	26 5/16	4	
	1032	4 Rolled/Flush Pull	10 1/2	24	6	13 7/8	27 3/8	12 13/16	26 5/16	3 3/8	
	1038	4 1/2 Rolled	10 1/2	24	6	13 7/8	27 3/8	12 13/16	26 5/16	2 11/16	
	2035	Flat trim	12	27	7 3/4	15 3/8	30 3/8	14 5/16	29 5/16	8 11/16	
	2036	1 1/4 Square	12	27	7 3/4	15 3/8	30 3/8	14 5/16	29 5/16	7 11/16	Any †Cosmic, †Galaxy, Mercury, Saturn or Grenadier P, Sentinel 5 & 10, Nebula 270
	2037	2 1/2 Rolled	12	27	7 3/4	15 3/8	30 3/8	14 5/16	29 5/16	6 7/16	
	2032	4 Rolled/Flush Pull	12	27	7 3/4	15 3/8	30 3/8	14 5/16	29 5/16	5 1/8	
	2038	4 1/2 Rolled	12	27	7 3/4	15 3/8	30 3/8	14 5/16	29 5/16	4 7/16	
	3035	Flat trim	16	32	7 3/4	19 3/8	35 3/8	18 5/16	34 5/16	8 11/16	
	3036	1 1/4 Square	16	32	7 3/4	19 3/8	35 3/8	18 5/16	34 5/16	7 11/16	Any †Cosmic, †Galaxy, Mercury, Saturn or Grenadier P, Sentinel 5-15, Nebula 250, 270, 272
	3037	2 1/2 Rolled	17	34	9	20 3/8	38 3/8	18 5/16	34 5/16	6 7/16	
	3032	4 Rolled/Flush Pull	16	32	7 3/4	19 3/8	35 3/8	18 5/16	34 5/16	5 1/8	
	3038	4 1/2 Rolled	16	32	7 3/4	19 3/8	35 3/8	18 5/16	34 5/16	4 7/16	
	4035	Flat trim	20	27	7 3/4	23 3/8	30 3/8	22 5/16	29 5/16	8 11/16	
	4036	1 1/4 Square	20	27	7 3/4	23 3/8	30 3/8	22 5/16	29 5/16	7 11/16	Two each of: any Cosmic, Galaxy, Mercury, Saturn or Grenadier P *, Sentinel 5
	4037	2 1/2 Rolled	20	27	7 3/4	23 3/8	30 3/8	22 5/16	29 5/16	6 7/16	
	4032	4 Rolled/Flush Pull	20	27	7 3/4	23 3/8	30 3/8	22 5/16	29 5/16	5 1/8	
	4038	4 1/2 Rolled	20	27	7 3/4	23 3/8	30 3/8	22 5/16	29 5/16	4 7/16	

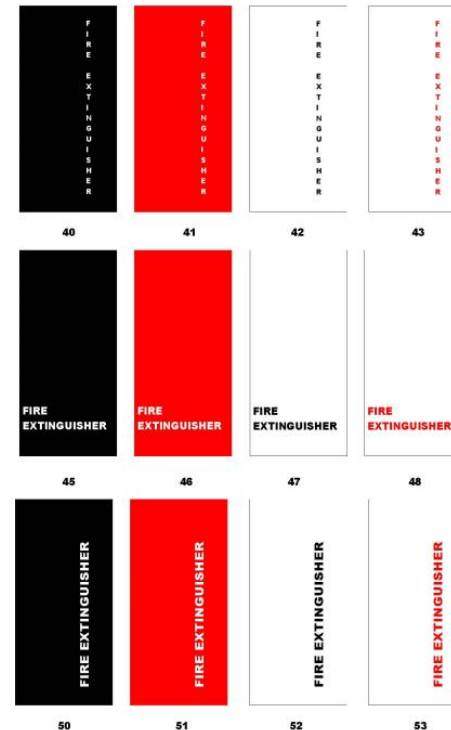


1832P48FX2—Flush Pull



Lightweight
Insulation

PANORAMA "P" & "Q" DOOR GLAZING STYLES



* 4" Rolled models have recessed pull for "P" and "Q" Doors and standard pull for "C" Styles

- Meets ADA Cabinet Projection Req.

† 20 lb Cosmic and Galaxy must be mounted on back of tub

ADA Cabinet Mounting Height: Standard Pull on C71 and Q Style Doors with Saf-T-Lok are 3 5/8" Higher than Door Center, so Allow for that When Mounting Cabinet. Standard Pull with No Lock, or Flush Pull are Centered on Door.



FOR MORE INFORMATION CALL 1-888-926-1365

Superior Specialty Supply • 9 Council Drive • PO Box 417 • Woodsboro, MD 21798 • www.sssupply.com